
Follow-up Radon Measurement Survey Report

Site:

**Fred Rodgers Magnet Academy
157 North Root Street,
Aurora, Illinois 60505**

Survey Dates: May 15, 2018 thru May 17, 2018

Follow-Up: November 7, 2018 thru November 9, 2018



Prepared For:

**East Aurora School District 131
417 Fifth Street
Aurora, Illinois 60505**

Carnow Conibear Project No. A146000151



Follow-up Radon Measurement Survey Report

Site:

Fred Rodgers Magnet Academy
157 North Root Street,
Aurora, Illinois 60505

Surveyed by:

A handwritten signature in black ink that reads "Nicole Bennett".

Nicole Bennett
Radon Measurement Professional

Report by:

A handwritten signature in black ink that reads "Daniel Lyons".

Daniel Lyons
Industrial Hygiene Technician

Reviewed by:

A handwritten signature in blue ink that reads "Derek Lantry".

Derek Lantry
Director, Technical Operations

Carnow Conibear Project No. A146000151

TABLE OF CONTENTS

1.0	EXECUTIVE SUMMARY	1
2.0	BACKGROUND	3
3.0	SCOPE OF WORK	4
4.0	METHODOLOGY	5
5.0	SUMMARY OF RESULTS	6
	Table 1.0 Radon Measurement Device Results	
6.0	CONCLUSIONS	9
7.0	LIMITATIONS AND CONDITIONS	10

APPENDICES

- Appendix A Partial Floor Plans – Radon Sampling Locations
- Appendix B Laboratory Analysis Report
- Appendix C Radon Measurement Professional License

1.0 EXECUTIVE SUMMARY

Carnow, Conibear, & Assoc., Ltd. (Carnow Conibear) was contracted by East Aurora School District 131 to perform a radon measurement survey at the Fred Rodgers Magnet Academy located at 157 North Root Street in Aurora, Illinois. The initial survey was conducted on May 15, 2018 and completed on May 17, 2018 by Nicole Bennett, an Illinois Emergency Management Agency (IEMA) licensed Radon Measurement Professional (License No. RNI2016213). Following the initial survey, Carnow Conibear conducted a limited follow-up radon measurement survey in locations exceeding the EPA recommended radon action level of 4.0 PicoCuries per liter (pCi/L). To delineate the elevated radon levels, additional sampling was performed in rooms located above areas exceeding the EPA recommended radon action level. The follow-up sampling was initiated on November 7, 2018 and completed on November 9, 2018 by Nicole Bennett. The scope of work included short-term (two to four day) radon measurements in frequently occupied rooms with substantial ground contact. The radon sampling was performed following IEMA and the United States Environmental Protection Agency (USEPA) testing protocols for commercial and school radon measurements, the radon device manufacturer's recommendations, and Carnow Conibear's Quality Assurance Plan.

May 15, 2018 thru May 17, 2018 (Initial Survey)

A total of twenty-six (26) radon test devices were deployed during the initial survey including twenty-three (23) single devices, two (2) duplicates, and one (1) blank.

November 7, 2018 thru November 9, 2018 (Follow-up Survey)

A total of four (4) radon test devices were deployed during the follow-up survey including three (3) single devices and one (1) duplicate.

Activated radon charcoal devices manufactured by Air Chek Inc. were utilized during the initial and follow-up radon surveys. The activated charcoal devices are passive devices containing activated carbon to measure radon. Initial testing was initiated on May 15, 2018 and completed on May 17, 2018. Follow-up testing was initiated on November 7, 2018 and completed on November 9, 2018.

Radon measurement results for initial testing ranged from less than ($<$) 0.3 to 4.5 pCi/L. Initial radon measurement results identified the Lower Level Room Under 120 exceeding the EPA recommended radon action level of 4.0 pCi/L. The follow-up radon result for the Lower Level Room Under 120 was 3.0 pCi/L. The average radon result $(4.5 \text{ pCi/L} + 3.0 \text{ pCi/L} / 2)$ within the Lower Level Room Under 120 is 3.8 pCi/L. Per IEMA, if the average of the initial and follow-up radon testing is less than 4.0 pCi/L no further action is required. The average indoor radon concentrations are 1.3 pCi/L nationwide. The average outdoor radon concentration is 0.4 pCi/L.

Based on the radon measurement results Carnow Conibear offers the following:

- Initial and follow-up testing confirmed an average radon concentration below the EPA recommended radon action level of 4.0 pCi/L.
- Routine follow-up radon measurement surveys are recommended every two (2) years at different seasonal times following IEMA and the USEPA testing protocols and the radon device manufacturer's recommendations.
- Additional testing is also recommended if significant changes are made to the building's structural or mechanical components.

2.0 BACKGROUND

Radon is a naturally occurring, radioactive, colorless, odorless, tasteless gas produced from the decay of uranium and radium found in most soil and rock. Natural soils and rock such as granites, shales, and corals, contaminated soils from uranium processing mills, contaminated building materials, and groundwater water supplies directly from wells are a few common sources of radon. Radon can be found at some level in all indoor and outdoor air. Unlike most airborne contaminants, radon is chemically inert, or chemically inactive. As a result, it is not chemically bound or attached to other materials and can move easily through porous materials or void space.

Typically, most radon gas is generated from the surrounding soil or bedrock, pulled through the soil or rock by air pressure differentials and enters the structure. However, radon gas can come from water, outside air, or contaminated building materials. The strength of the radon source has the biggest impact on indoor radon concentrations. The route of entry (i.e. through holes in the foundation), the building's ventilation rate, foundation type, and differences in soils beneath the building can affect the indoor radon concentrations.

The primary health effect attributed to radon exposure is lung cancer. The World Health Organization (WHO), the National Academy of Sciences, the US Department of Health and Human Services, and the EPA classify radon as known human carcinogen. The EPA states radon is the largest source of radiation exposure and risk to the general public. When radon and products of radon decay are inhaled, decay can occur while in contact with the lung prior to being expelled. Because radon is chemically inert, most inhaled radon is rapidly exhaled. However, the inhaled decay products are readily deposited in the lungs, release energy in the form of radiation causing lung tissue damage, and consequently increase the risk of lung cancer.

Radon concentrations in air are commonly expressed in picoCuries per liter (pCi/L) in the United States. An EPA national residential radon survey completed in 1991, determined the average indoor radon level is 1.3 pCi/L and the average outdoor level is about 0.4 pCi/L. The National Academy of Sciences' (NAS) latest report on radon, the Biological Effects of Ionizing Radiation (BEIR) VI Report (1999), estimates radon in indoor air causes about 21,000 lung cancer deaths each year in the United States. The EPA states that any level of radon carries some risk, there are no safe levels, and has established an action level of 4.0 pCi/L.

3.0 SCOPE OF WORK

Carnow, Conibear, & Assoc., Ltd. (Carnow Conibear) was contracted by East Aurora School District 131 to perform a radon measurement survey at the Fred Rodgers Magnet Academy located at 157 North Root Street in Aurora, Illinois.

The scope of work included short-term radon measurements in frequently occupied rooms with substantial ground contact. The duration of short-term measurements can range from two (2) to four (4) days. Prior to placement of the radon measurement devices a Quality Assurance Project Plan (QAPP) was developed and general observations were performed to verify test conditions, identify device placement locations, and determine structural and mechanical building components. The QAPP was created to document and describe the necessary quality assurance procedures, quality control activities, and provide a clear, concise, and complete plan for the radon measurement operations. The non-interference agreement is required by the IEMA to document an understanding of the required closed building testing conditions. Observations of test conditions verified closed building conditions were maintained at a minimum of twelve (12) hours prior to testing and throughout the measurement period. Closed building conditions are necessary for short-term radon measurements in order to stabilize the radon and radon decay product concentrations and increase the reproducibility of the measurement. Closed building conditions require windows and exterior doors on all levels be kept closed (except for normal entry and exit) during the measurement period. Closed building conditions also require the normal operation of heating, ventilating, and air conditions systems.

Initial radon test devices were deployed in twenty-three (23) locations. In addition, two (2) duplicates and one (1) blank were utilized to measure precision and bias, and ensure quality data. Follow-up radon test devices were deployed in three (3) locations. In addition, one (1) duplicate was utilized to measure precision and bias, and ensure quality data. Radon test devices were documented in a permanent log noting the address of the building measured, a diagram of the test area noting the exact locations of all measurement devices deployed, exact start and stop times of the measurement period, a description of the device used and serial number, and the name and IEMA license number of the Radon Measurement Professional. At the end of the measurement period the radon test devices were retrieved, resealed, and mailed to the laboratory for analysis.

The radon measurement results are reported in picoCurie per liter (pCi/L). A picoCurie per liter is 2.22 atomic radon disintegrations per minute for each liter of air. The results of the radon measurements are interpreted to determine the need for additional testing and assess the quality and confidence of the measurement data. Typically, follow-up measurements will be recommended in every room with results greater than 4.0 pCi/L. The recommendation to mitigate elevated levels of radon shall not be based on the initial measurement results.

4.0 METHODOLOGY

The radon testing was performed following requirements set forth by the IEMA, USEPA, and Carnow Conibear's Quality Assurance Plan. The radon measurement survey consisted of several phases. The initial phase consisted of preliminary testing protocol, including an explanation of services, instructions to comply with closed building conditions, the development of the Quality Assurance Project Plan, and determination of the testing period. Next, general observations of the building were performed to verify test conditions, identify device placement locations, and determine structural and mechanical building components.

The measurement phase included the radon testing device placement and retrieval. Activated radon charcoal devices manufactured by Air Chek Inc. were utilized during this radon survey. The activated charcoal devices are passive devices containing activated carbon to measure radon. Radon test devices were placed in such a way to limit unintentional interference from building occupants. The measurement devices were placed at least three feet from doors, windows to the outside, at least one foot from exterior walls, at least four feet from heat sources, out of the direct flow of ventilation ducts and sunlight, and suspended in the general breathing zone. Duplicate tests were conducted for a minimum of 10% of the total radon test devices deployed to measure precision. Field blanks were submitted for a minimum of 5% of the total number of radon test devices deployed to measure background gamma radiation. Spike tests were not submitted for this survey, but are submitted for a minimum of three per 100 radon test devices or a minimum of three per year to measure laboratory accuracy. A total of twenty-six (26) initial radon test devices were deployed including twenty-three (23) single devices, two (2) duplicates, and one (1) blank. Additionally, a total of four (4) follow-up radon test devices were deployed, including three (3) single devices and one (1) duplicate. At the end of the measurement periods the radon measurement devices were retrieved, resealed, and shipped overnight to Air Chek Inc. for analysis. Air Chek Inc. calculates the radon concentration after measuring the gamma activity by the radon decay products produced from the random decay of the collected radon. The final phase consisted of interpreting the results and an assessment of the quality and confidence of the measurement data.

5.0 SUMMARY OF RESULTS

Table 1.0 Radon Measurement Device Results identify all the radon measurement devices deployed and the reported radon results. The radon measurement results are reported in picoCurie per liter (pCi/L).

The average radon measurement results for initial and follow-up testing indicate areas tested were below the EPA and IEMA recommended radon action level of 4.0 pCi/L during the time of the test. No radon mitigation systems were observed in the building. Additionally, the following testing abnormalities were noted during the radon measurement interval:

- Boys Locker Room 114 (122) – Device missing upon follow-up testing retrieval

Table 1.0 Radon Measurement Device Results

Fred Rodgers Magnet Academy
501 College Avenue
Aurora, Illinois 60505

Device Location	Device Serial #	Start Date	Start Time	Stop Date	Stop Time	Result (pCi/L)	Average Result (pCi/L)	Comments
LL Under 119	9044459	5/15/2018	6:29 PM	5/17/2018	6:53 PM	2.4	-	
LL Under 120	9044460	5/15/2018	6:30 PM	5/17/2018	6:57 PM	4.5	3.8	
LL Under 120	9106294	11/7/2018	6:00 PM	11/9/2018	6:36 PM	2.9		Follow-Up Duplicate RPD = 3.4%
LL Under 120	9106293	11/7/2018	6:00 PM	11/9/2018	6:36 PM	3.0		Follow-Up Measurement
Room 120	9106295	11/7/2018	6:02 PM	11/9/2018	6:38 PM	2.7	-	Follow-Up Measurement
LL Under 117	9044461	5/15/2018	6:31 PM	5/17/2018	6:55 PM	1.9	-	
Gymnasium 111	9044462	5/15/2018	6:37 PM	5/17/2018	6:52 PM	1	-	
Gymnasium 111	9044463	5/15/2018	6:38 PM	5/17/2018	6:53 PM	0.8	-	
Boys Locker Room 114 (122)	9044464	5/15/2018	6:40 PM	---	---	---	-	Device missing at time of retrieval
Gym Storage 113 (123)	9044465	5/15/2018	6:41 PM	5/17/2018	6:55 PM	2.7	-	
Gym Storage 112	9044466	5/15/2018	6:42 PM	5/17/2018	6:58 PM	1.2	-	
Girls Locker Room 122 (113)	9044467	5/15/2018	6:43 PM	5/17/2018	6:57 PM	1.3	-	
Girls Locker Room Office (115)	9044468	5/15/2018	6:44 PM	5/17/2018	6:57 PM	< 0.3	-	
Girls Locker Room Closet (116)	9044469	5/15/2018	6:44 PM	5/17/2018	6:51 PM	< 0.3	-	
Classroom 106	9044470	5/15/2018	6:49 PM	5/17/2018	6:56 PM	< 0.3	-	
Classroom 106	9044471	5/15/2018	6:49 PM	5/17/2018	6:57 PM	< 0.3	-	Duplicate RPD = 0.0%
Classroom 105	9044472	5/15/2018	6:51 PM	5/17/2018	6:58 PM	0.6	-	

Table 1.0 Radon Measurement Device Results

**Fred Rodgers Magnet Academy
501 College Avenue
Aurora, Illinois 60505**

Device Location	Device Serial #	Start Date	Start Time	Stop Date	Stop Time	Result (pCi/L)	Average Result (pCi/L)	Comments
Janitor Closet 109	9044473	5/15/2018	6:53 PM	5/17/2018	6:54 PM	< 0.3	-	
Janitor Closet 110	9044474	5/15/2018	6:53 PM	5/17/2018	6:54 PM	< 0.3	-	
Janitor Closet 103	9044475	5/15/2018	6:55 PM	5/17/2018	6:55 PM	0.6	-	
Janitor Closet 102	9044476	5/15/2018	6:55 PM	5/17/2018	6:58 PM	0.7	-	
Janitor Office 104	9044477	5/15/2018	6:56 PM	5/17/2018	6:56 PM	< 0.3	-	
Janitor Closet 124	9044478	5/15/2018	6:58 PM	5/17/2018	7:00 PM	1.6	-	
Janitor Closet 125	9044479	5/15/2018	6:58 PM	5/17/2018	6:58 PM	0.6	-	
Electrical Room 126	9044480	5/15/2018	6:59 PM	5/17/2018	6:59 PM	< 0.3	-	
Electrical Room 126	9044481	5/15/2018	6:59 PM	5/17/2018	6:59 PM	< 0.3	-	Duplicate RPD = 0.0%
Cafeteria 101A	9044482	5/15/2018	7:01 PM	5/17/2018	7:02 PM	< 0.3	-	
Cafeteria 101A	9044483	5/15/2018	7:02 PM	5/17/2018	7:02 PM	< 0.3	-	
Classroom 100A	9044484	5/15/2018	7:03 PM	5/17/2018	7:04 PM	< 0.3	-	
Hallway	9044485	5/15/2018	7:04 PM	5/17/2018	7:05 PM	< 0.3	-	Blank
Boys Locker Room 114 (122)	9106292	11/7/2018	5:56 PM	11/9/2018	---	---	-	Device missing at time of retrieval

RPD - Relative Percent Difference = difference divided by the average of simultaneous results times 100. Results less than 4.0 pCi/L shall agree with a RPD of less than 67 percent. Results greater than 4.0 pCi/l shall agree with a RDP of less than 36 percent.
The EPA and IEMA recommended radon action level is 4.0 pCi/L.

6.0 CONCLUSIONS

Carnow, Conibear, & Assoc., Ltd. (Carnow Conibear) was contracted by East Aurora School District 131 to perform a radon measurement survey at the Fred Rodgers Magnet Academy located at 157 North Root Street in Aurora, Illinois. The initial survey was conducted on May 15, 2018 and completed on May 17, 2018 by Nicole Bennett, an Illinois Emergency Management Agency (IEMA) licensed Radon Measurement Professional (License No. RNI2016213). Following the initial survey, Carnow Conibear conducted a limited follow-up radon measurement survey in locations exceeding the EPA recommended radon action level of 4.0 PicoCuries per liter (pCi/L). To delineate the elevated radon levels, additional sampling was performed in rooms located above areas exceeding the EPA radon action level. The follow-up sampling was initiated on November 7, 2018 and completed on November 9, 2018 by Nicole Bennett. The scope of work included short-term (two to four day) radon measurements in frequently occupied rooms with substantial ground contact. The radon sampling was performed following IEMA and the United States Environmental Protection Agency (USEPA) testing protocols for commercial and school radon measurements, the radon device manufacturer's recommendations, and Carnow Conibear's Quality Assurance Plan.

Radon measurement results for initial testing ranged from less than ($<$) 0.3 to 4.5 pCi/L. Initial radon measurement results identified the Lower Level Room Under 120 exceeding the EPA recommended radon action level of 4.0 pCi/L. The follow-up radon result for the Lower Level Room Under 120 was 3.0 pCi/L. The average radon result $(4.5 \text{ pCi/L} + 3.0 \text{ pCi/L} / 2)$ within the Lower Level Room Under 120 is 3.8 pCi/L. Per IEMA, if the average of the initial and follow-up radon testing is less than 4.0 pCi/L no further action is required.

Based on the radon measurement results Carnow Conibear offers the following:

- Initial and follow-up testing confirmed an average radon concentration below the EPA recommended radon action level of 4.0 pCi/L.
- Routine follow-up radon measurement surveys are recommended every two (2) years at different seasonal times following IEMA and the USEPA testing protocols and the radon device manufacturer's recommendations.
- Additional testing is also recommended if significant changes are made to the building's structural or mechanical components.

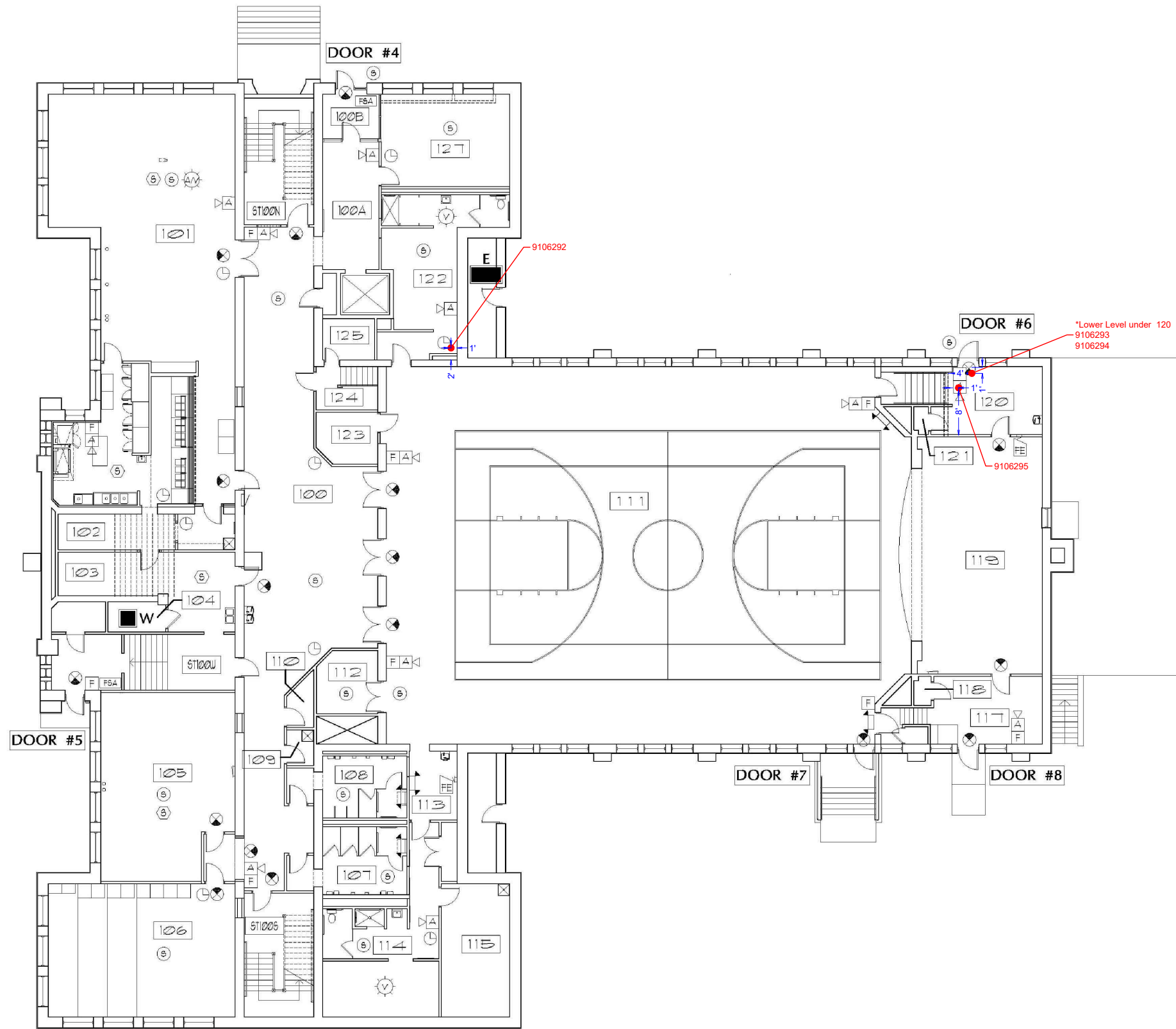
7.0 LIMITATIONS AND CONDITIONS

The information contained in this report was prepared for the exclusive use and reliance of East Aurora School District 131 and Carnow Conibear. This information is based on the specific parameters of the scope of work for this project and the regulations in force at the time of the report.

Carnow Conibear has applied prevailing industry standards and reasonable judgment and effort within the scope of work, while conducting the radon measurement survey. The standards, judgment, and effort used by Carnow Conibear personnel to investigate, assess, and determine the presence of potential environmental hazards and liabilities associated with the radon survey at the Fred Rodgers Magnet Academy, Aurora, Illinois are consistent with requirements outlined in federal and state guidelines. Carnow Conibear makes no warranty, express or implied, that the findings and interpretations in this report are a complete representation of the environmental hazards and liabilities, associated with the Fred Rodgers Magnet Academy, Aurora, Illinois.

APPENDIX A

Floor Plans – Radon Sampling Locations



1 RADON RESAMPLE LOCATIONS
GROUND FLOOR PLAN

NOT TO SCALE

TRUE NORTH

TESTED BY: Derek Lantry IEMA License #: RNI2004213	CLIENT: East Aurora Public School District 131 417 Fifth Street Aurora, Illinois, 60505	LEGEND: <div><div></div> Approximate location of activated charcoal radon measurement device</div> <div><div>4482418</div> Radon measurement device serial number</div> <div><div>010'20'</div></div>	SHEET TITLE: Radon Retesting Locations at Fred Rogers Magnet Academy 501 College Avenue Aurora, Illinois 60505	Carnow, Conibear & Assoc., Ltd. Environmental Consulting Services 600 W. Van Buren St., Suite 500, Chicago, IL 60607 t: 312.782.4486 f: 312.782.5145 www.ccaltd.com	CCA PROJECT NO. A146000137
DRAWN BY: J. Kalingsan					SURVEY DATE: 11/7/2018 to 11/9/2018
CHECKED BY: D. Lantry					SHEET NO. Rn-1



APPENDIX B

Laboratory Analysis Report

November 13, 2018

**** LABORATORY ANALYSIS REPORT ****

Radon test result report for:

**SCHOOL
RODGERS**

Kit #	Room Id	Started	Ended	pCi/L	Analyzed
9106294	LL UNDER 120	2018-11-07 @ 6:00 pm	2018-11-09 @ 7:00 pm	2.9 ± 0.4	2018-11-12
9106293	LL UNDER 120	2018-11-07 @ 6:00 pm	2018-11-09 @ 7:00 pm	3.0 ± 0.4	2018-11-12
9106295	ROOM 120	2018-11-07 @ 6:00 pm	2018-11-09 @ 7:00 pm	2.7 ± 0.4	2018-11-12

Air Chek 1936 Butler Bridge Rd, Mills River, NC 28759-3892 Phone: (828) 684-0893 Fax: (828) 684-8498

May 24, 2018

**** LABORATORY ANALYSIS REPORT ****

Radon test result report for:

FRED RODGERS MAGNET ACADEMY
501 COLLEGE AVE., AURORA, IL

Kit #	Room Id	Started	Ended	pCi/L	Analyzed
9044482	CAFETERIA 101A	2018-05-15 @ 7:00 pm	2018-05-17 @ 7:00 pm	< 0.3	2018-05-21
9044483	CAFETERIA 101A	2018-05-15 @ 7:00 pm	2018-05-17 @ 7:00 pm	< 0.3	2018-05-21
9044484	CLASSROOM 100A	2018-05-15 @ 7:00 pm	2018-05-17 @ 7:00 pm	< 0.3	2018-05-21
9044472	CLASSROOM 105	2018-05-15 @ 7:00 pm	2018-05-17 @ 7:00 pm	0.6 ± 0.3	2018-05-21
9044471	CLASSROOM 106	2018-05-15 @ 7:00 pm	2018-05-17 @ 7:00 pm	< 0.3	2018-05-21
9044470	CLASSROOM 106	2018-05-15 @ 7:00 pm	2018-05-17 @ 7:00 pm	< 0.3	2018-05-21
9044481	ELECTRICAL ROOM 126	2018-05-15 @ 7:00 pm	2018-05-17 @ 7:00 pm	< 0.3	2018-05-21
9044480	ELECTRICAL ROOM 126	2018-05-15 @ 7:00 pm	2018-05-17 @ 7:00 pm	< 0.3	2018-05-21
9044467	GIRLS LOCKER ROOM 122 (113)	2018-05-15 @ 7:00 pm	2018-05-17 @ 7:00 pm	1.3 ± 0.3	2018-05-21
9044469	GIRLS LOCKER ROOM CLOSET (116)	2018-05-15 @ 7:00 pm	2018-05-17 @ 7:00 pm	< 0.3	2018-05-21
9044468	GIRLS LOCKER ROOM OFFICE (115)	2018-05-15 @ 7:00 pm	2018-05-17 @ 7:00 pm	< 0.3	2018-05-21
9044466	GYM STORAGE 112	2018-05-15 @ 7:00 pm	2018-05-17 @ 7:00 pm	1.2 ± 0.3	2018-05-21
9044465	GYM STORAGE 113 (123)	2018-05-15 @ 7:00 pm	2018-05-17 @ 7:00 pm	2.7 ± 0.4	2018-05-21
9044462	GYMNASIUM 111	2018-05-15 @ 7:00 pm	2018-05-17 @ 7:00 pm	1.0 ± 0.3	2018-05-21
9044463	GYMNASIUM 111	2018-05-15 @ 7:00 pm	2018-05-17 @ 7:00 pm	0.8 ± 0.3	2018-05-21
9044485	HALLWAY	2018-05-15 @ 7:00 pm	2018-05-17 @ 7:00 pm	< 0.3	2018-05-21
9044476	JANITOR CLOSET 102	2018-05-15 @ 7:00 pm	2018-05-17 @ 7:00 pm	0.7 ± 0.3	2018-05-21
9044475	JANITOR CLOSET 103	2018-05-15 @ 7:00 pm	2018-05-17 @ 7:00 pm	0.6 ± 0.3	2018-05-21
9044473	JANITOR CLOSET 109	2018-05-15 @ 7:00 pm	2018-05-17 @ 7:00 pm	< 0.3	2018-05-21
9044474	JANITOR CLOSET 110	2018-05-15 @ 7:00 pm	2018-05-17 @ 7:00 pm	< 0.3	2018-05-21
9044478	JANITOR CLOSET 124	2018-05-15 @ 7:00 pm	2018-05-17 @ 7:00 pm	1.6 ± 0.4	2018-05-21
9044479	JANITOR CLOSET 125	2018-05-15 @ 7:00 pm	2018-05-17 @ 7:00 pm	0.6 ± 0.3	2018-05-21
9044477	JANITOR OFFICE 104	2018-05-15 @ 7:00 pm	2018-05-17 @ 7:00 pm	< 0.3	2018-05-21
9044461	LL UNDER 117	2018-05-15 @ 7:00 pm	2018-05-17 @ 7:00 pm	1.9 ± 0.4	2018-05-21
9044459	LL UNDER 119	2018-05-15 @ 6:00 pm	2018-05-17 @ 7:00 pm	2.4 ± 0.4	2018-05-21
9044460	LL UNDER 120	2018-05-15 @ 7:00 pm	2018-05-17 @ 7:00 pm	4.5 ± 0.4	2018-05-21

APPENDIX C

Radon Measurement Professional License

Bruce Rauner
Governor

State of Illinois
IEMA Division of Nuclear Safety

James K. Joseph
Director

Pursuant to the Radon Industry Licensing Act, 420 ILCS 44 et seq. and 32 Illinois Administrative Code 422, Licensing of Radon Detection and Mitigation Services, and in reliance on statements and representations heretofore made by the licensee, a license is hereby issued.

This is to certify that **Nicole Bennett**

License Number **RNI2016213**

has met the requirements for **Radon Measurement Professional**

Issued - Expires **05/18/2016 - 05/31/2021**



Limited to Radon measurements of residential real estate, home environment, school and commercial buildings only.

161391001

Patrick I. Daniels

Patrick I. Daniels, Radon Program