



**Pest Control Bid #2021-4**  
**ADDENDUM #1 - Issued 2/22/2021**

The questions/comments outlined below were received. The answers are shown below in italics.

- 1. Two sites were added in September 2020 just making sure you do not want those buildings serviced on this new bid.**

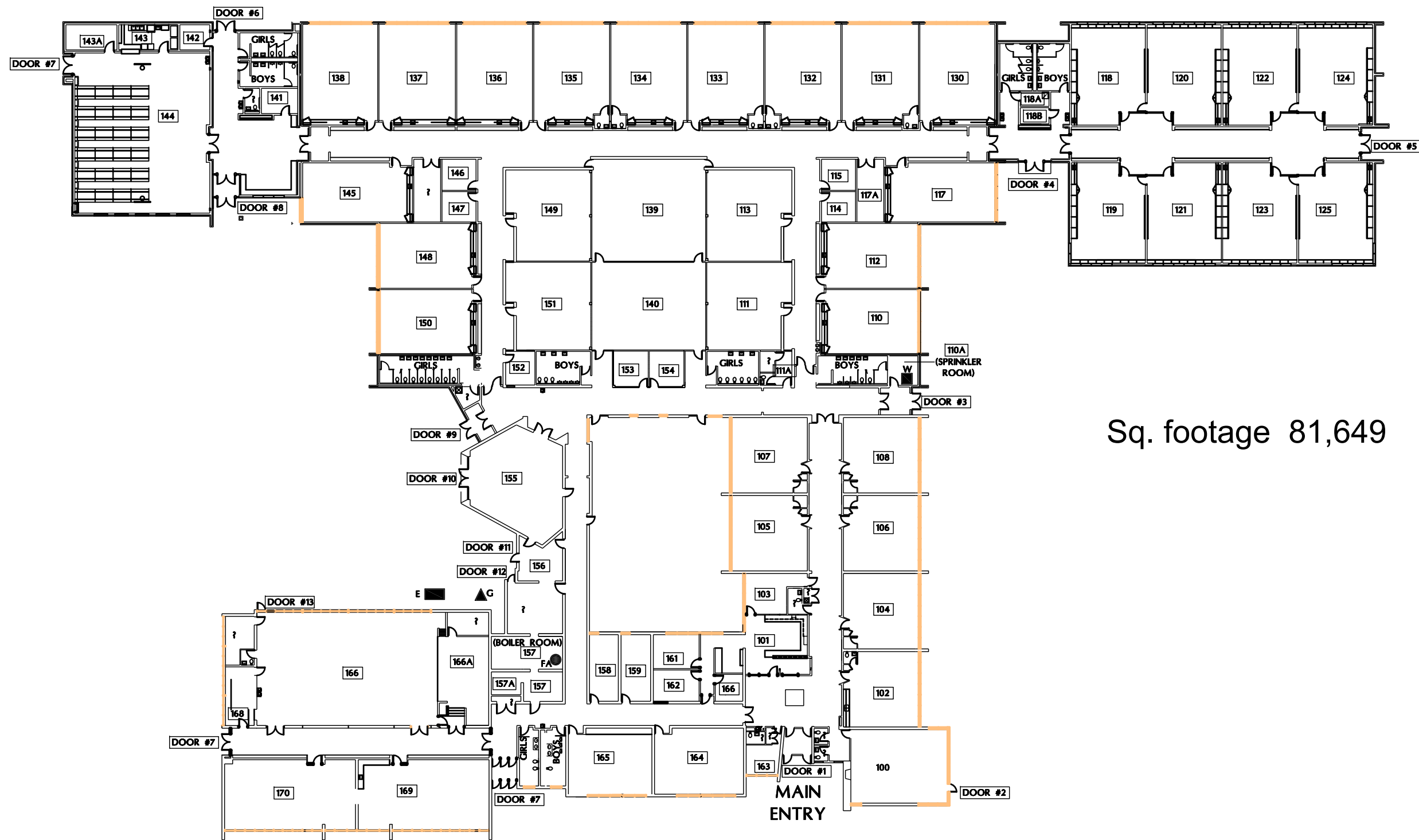
*The district recently purchased the complex attached to the Early Childhood Center for its East Aurora Excel Academy (EA2) program. The additional addresses are 280 E. Indian Trail and 300 E. Indian Trail in Aurora. A map of the additional portion of the building is available on the district website.*

- 2. Is prior pricing (bid tabulations) available for release on the current/expiring contract?**

*Addendums are utilized to amend the bid specifications only. As such, prior pricing may not be obtained through this process.*

- 3. Are site assessment visits allowed for certain locations if needed?**

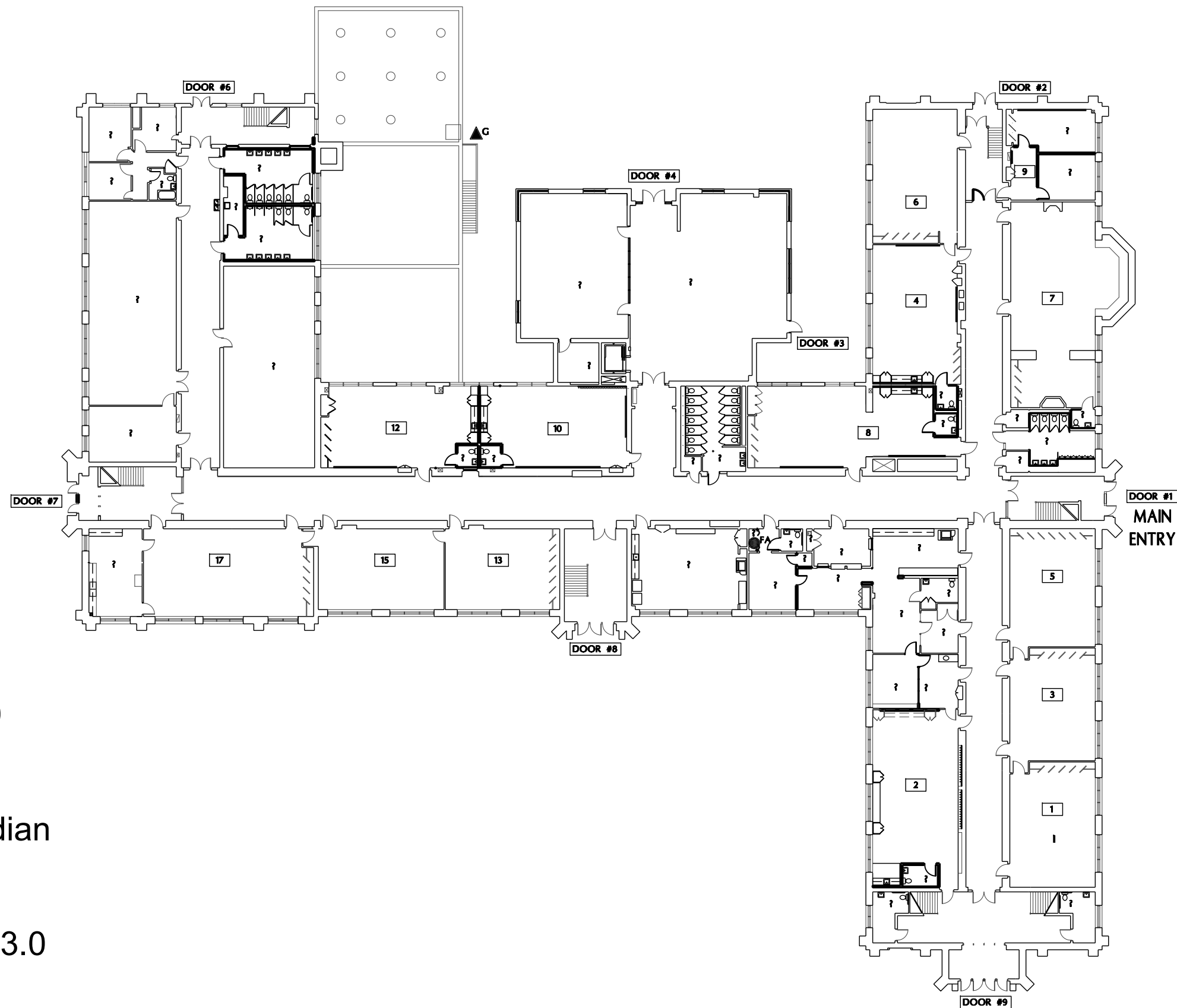
*Due to the ongoing pandemic and preparation for the return of students and staff, site assessments will not be provided before the bid deadline. Please utilize the maps provided in the specifications.*



- ▲ MAIN GAS SHUT-OFF
- MAIN ELECTRIC SHUT-OFF
- MAIN WATER SHUT-OFF (SPRINKLER ROOM)
- FIRE ALARM PANEL LOCATION (BOILER ROOM)

Sq. footage 81,649

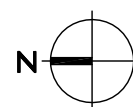
**OVERALL FLOOR PLAN**  
 Scale: 1"=40'-0"



Sq. ft == 89,690

Fireman  
Mid-shift custodian  
3 custodians

$89,690 / 30K = 3.0$



## FIRST FLOOR PLAN

Scale: 1"=30'-0"



EAST AURORA SCHOOL DISTRICT - 131

417 Fifth Street, Aurora, Illinois

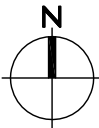
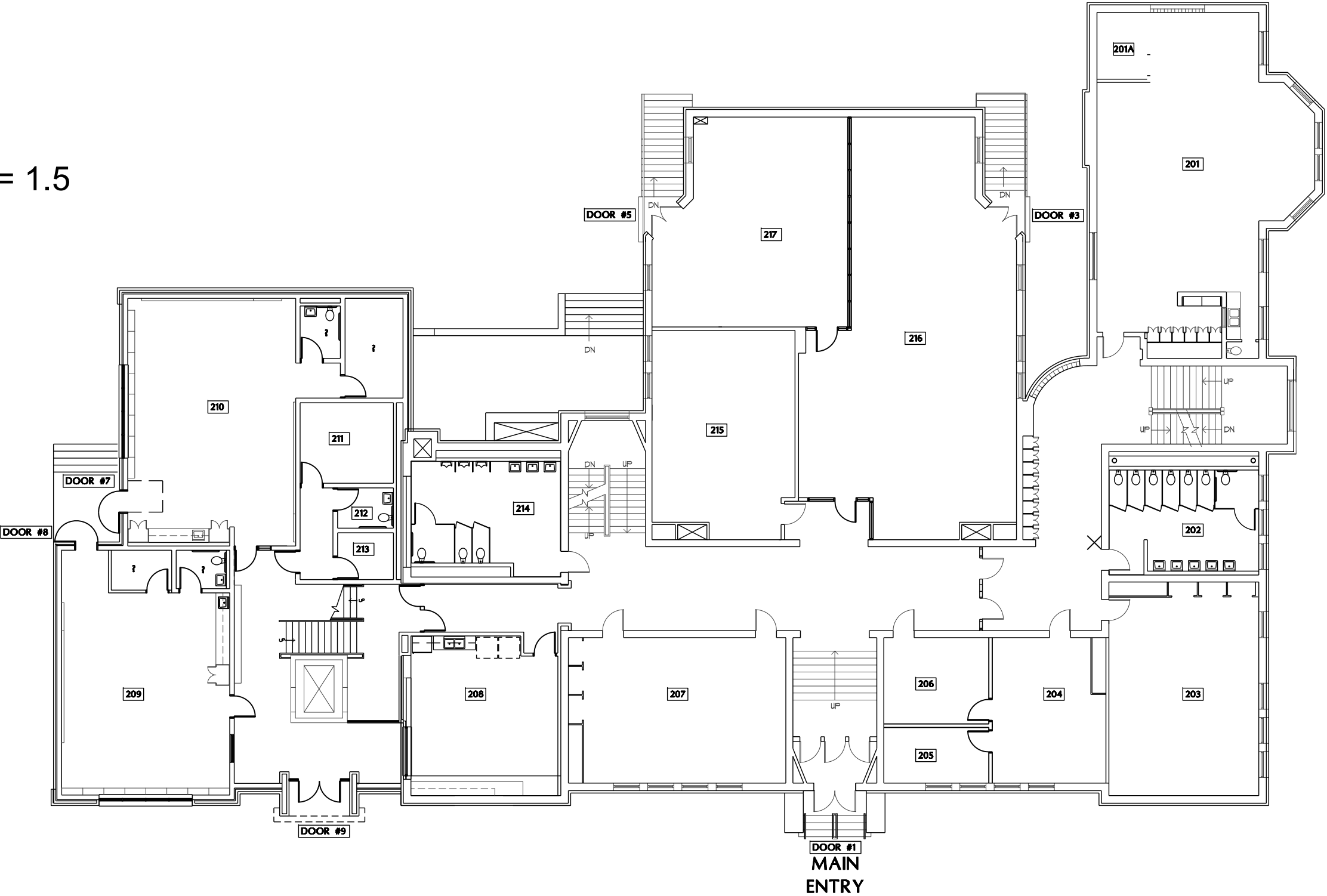
C.M. BARDWELL ELEMENTARY SCHOOL

550 South Lincoln Avenue, Aurora, Illinois

Sq. ft = 37,433

Fireman  
2 custodians

$37,433 / 30K = 1.5$



FIRST FLOOR PLAN

Scale: 1/16"=1'-0"

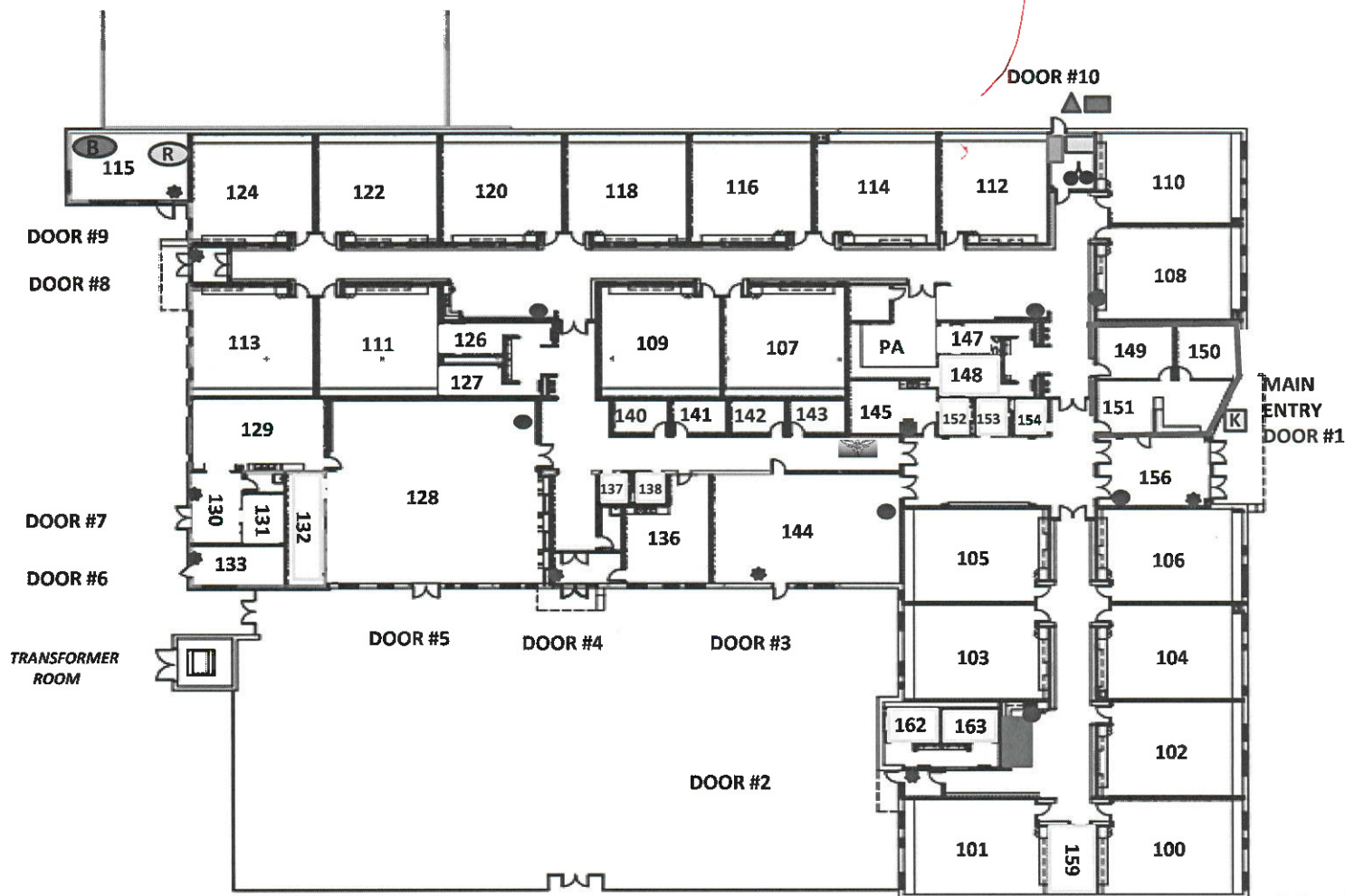


EAST AURORA SCHOOL DISTRICT - 131

417 Fifth Street, Aurora, Illinois

W.S. BEAUPRE ELEMENTARY SCHOOL

954 East Benton Street, Aurora, Illinois



#### LEGEND:

- FIRE EXTINGUISHER
- PULL STATION
- MAIN ELECTRIC SHUT-OFF
- MAIN GAS SHUT-OFF
- MAIN WATER SHUT-OFF
- PRIMARY EXIT ROUTE
- 2ndry EXIT ROUTE
- AED
- KNOX BOX
- MAIN OFFICE
- FIRE ALARM PANEL
- PA SYSTEM
- ROOF ACCESS
- SPRINKLER ROOM
- NURSE'S OFFICE
- BOILER ROOM

ATTENTION:  
In case of TORNADO go to nearest  
designated SHELTER IN PLACE

SQ. FT 36,000



### **BENAVIDES FULL DAY KINDERGARTEN CENTER**

254 E. Indian Tr. Aurora, IL

**PRIMARY FIRE = EXIT THROUGH DOOR #2**

**2ndry FIRE = EXIT THROUGH DOOR #1**

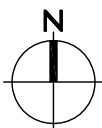
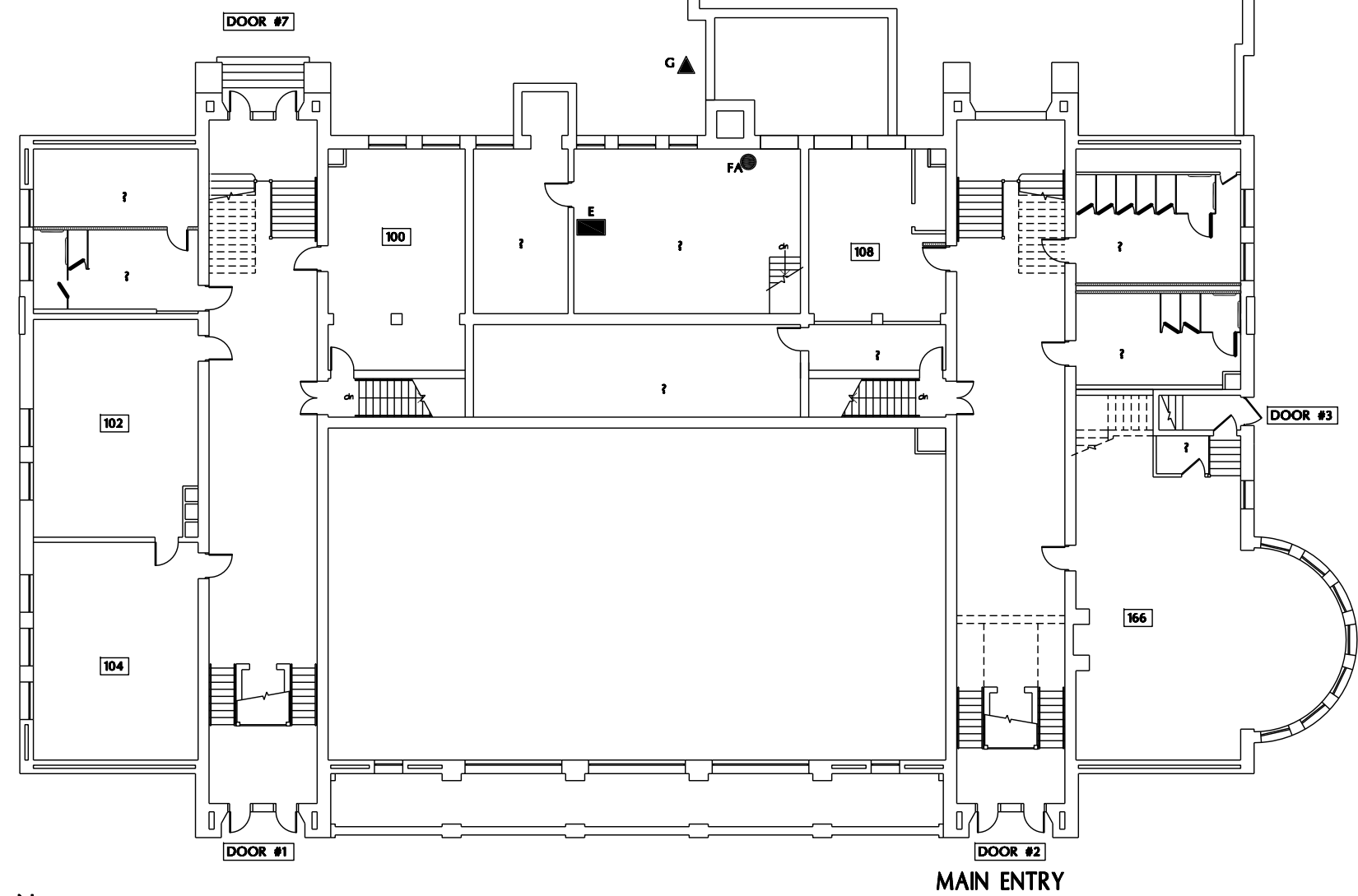
**TORNADO SHELTER = EXIT CLASSROOM AND SIT AGAINST WALL**

Sq. ft = 49,939

Fireman  
2 custodians

49,939 / 30K = 1.6

- ▲ MAIN GAS SHUT-OFF
- MAIN ELECTRIC SHUT-OFF
- MAIN WATER SHUT-OFF (SPRINKLER ROOM)
- FIRE ALARM PANEL LOCATION (BOILER ROOM)



FLOOR PLAN - FIRST FLOOR (GOUND LEVEL OF ORIGINAL BUILDING)

Scale: 1"=20'-0"



EAST AURORA SCHOOL DISTRICT - 131

417 Fifth Street, Aurora, Illinois

L.D. BRADY ELEMENTARY SCHOOL

600 Columbia Street, Aurora, Illinois

# EMERGENCY EVACUATION ROUTE:

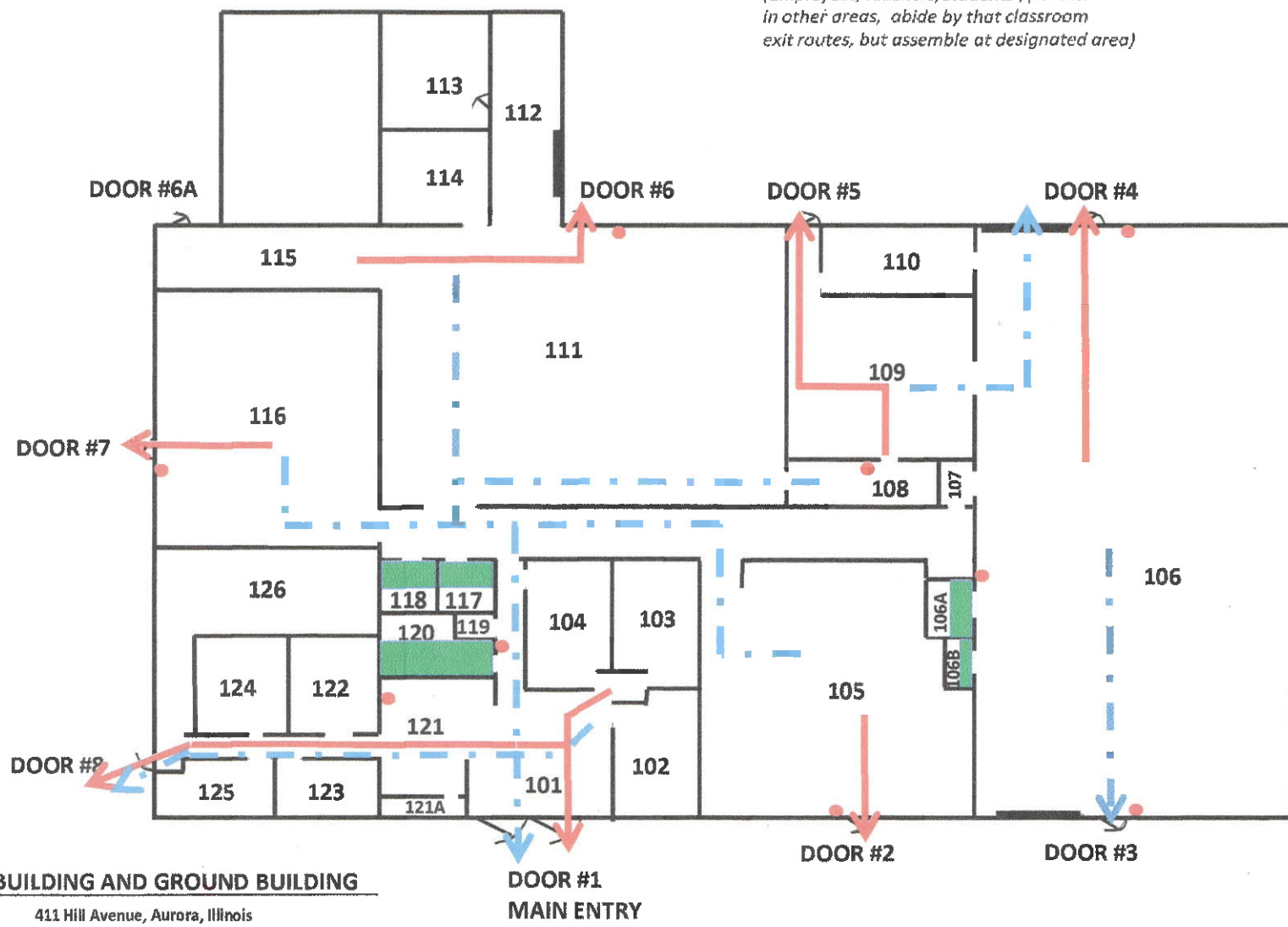
(Employees/teachers/students /parents  
in other areas, abide by that classroom  
exit routes, but assemble at designated area)

## LEGEND:

- FIRE EXTINGUISHER
- EMERGENCY EXIT ROUTE
- - - SECONDARY EXIT ROUTE

## ATTENTION:

In case of **TORNADO** go to nearest  
designated **SHELTER IN PLACE**



**BUILDING AND GROUND BUILDING**

411 Hill Avenue, Aurora, Illinois

**FLOOR PLAN**

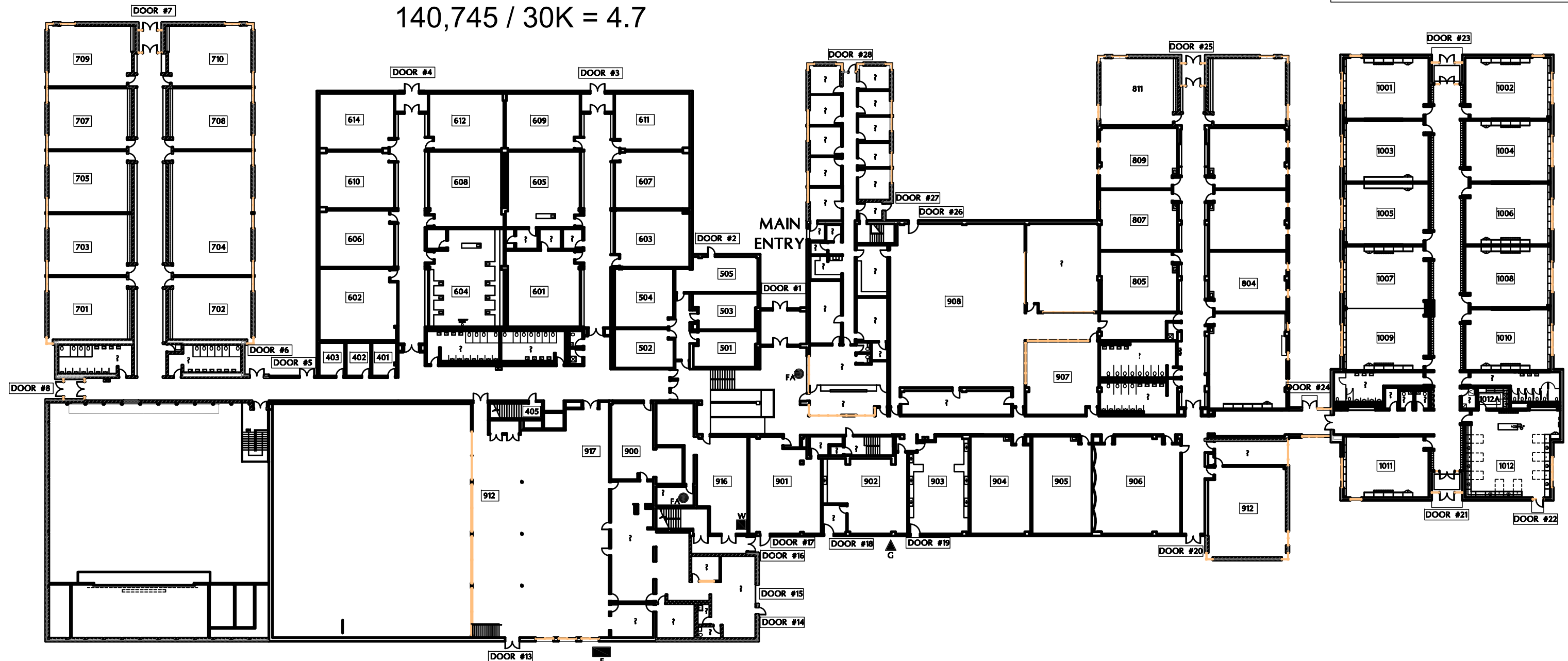


Sq. ft = 140,745

Bld engineer  
Mid-shift custodian  
4 custodians

$$140,745 / 30K = 4.7$$

- ▲ MAIN GAS SHUT-OFF
- MAIN ELECTRIC SHUT-OFF
- MAIN WATER SHUT-OFF
- FIRE ALARM PANEL LOCATION



## UPPER LEVEL FLOOR PLAN

Scale: 1" = 40'-0"



EAST AURORA SCHOOL DISTRICT - 131

417 Fifth Street, Aurora, Illinois

COWHERD MIDDLE SCHOOL

441 N. Farnsworth Avenue, Aurora, Illinois

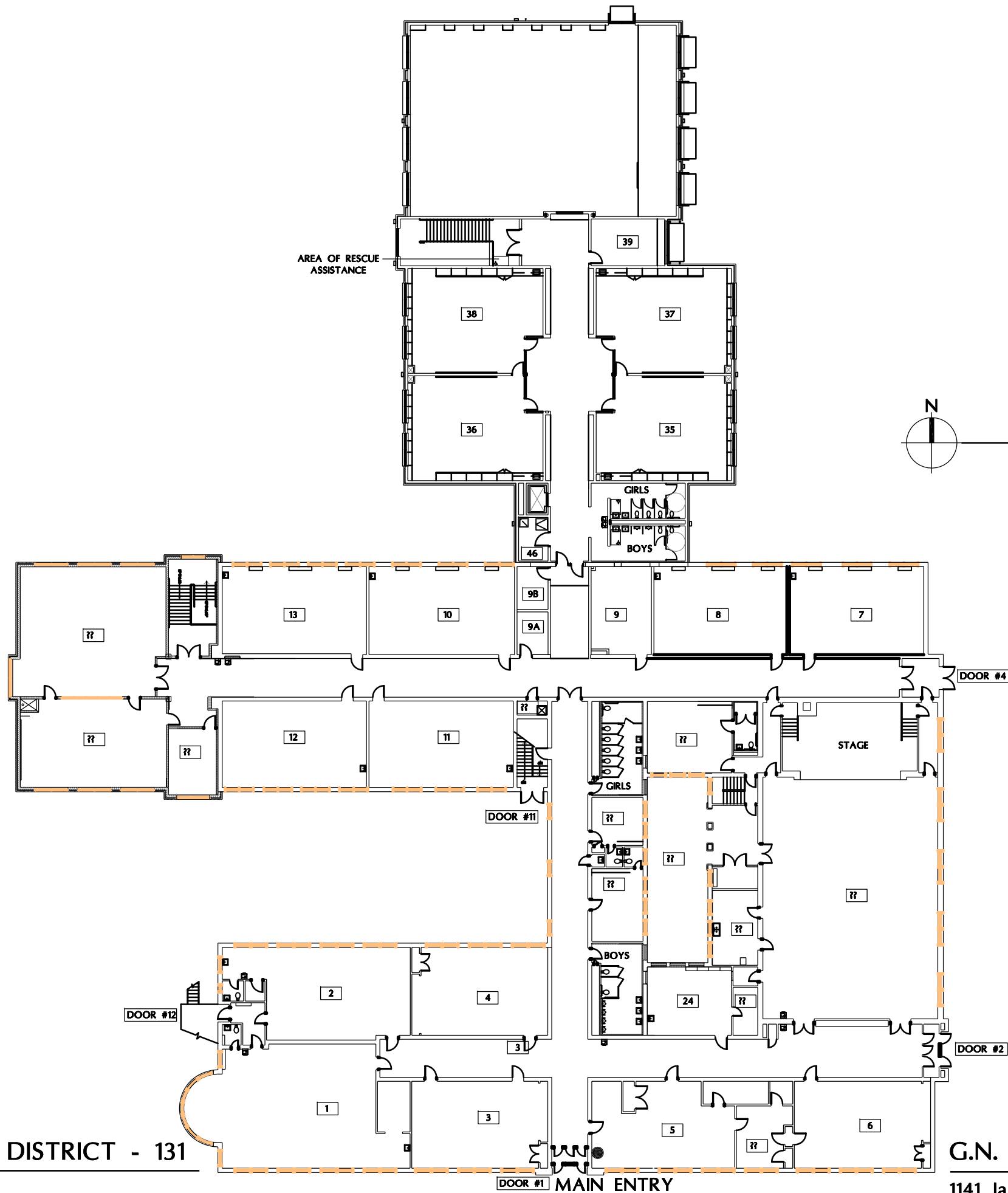


Sq. ft = 63,534

Fireman  
2 custodians

$63,534 / 30K = 2.1$

- ▲ MAIN GAS SHUT-OFF
- MAIN ELECTRIC SHUT-OFF
- MAIN WATER SHUT-OFF (SPRINKLER ROOM)
- FIRE ALARM PANEL LOCATION (BOILER ROOM)

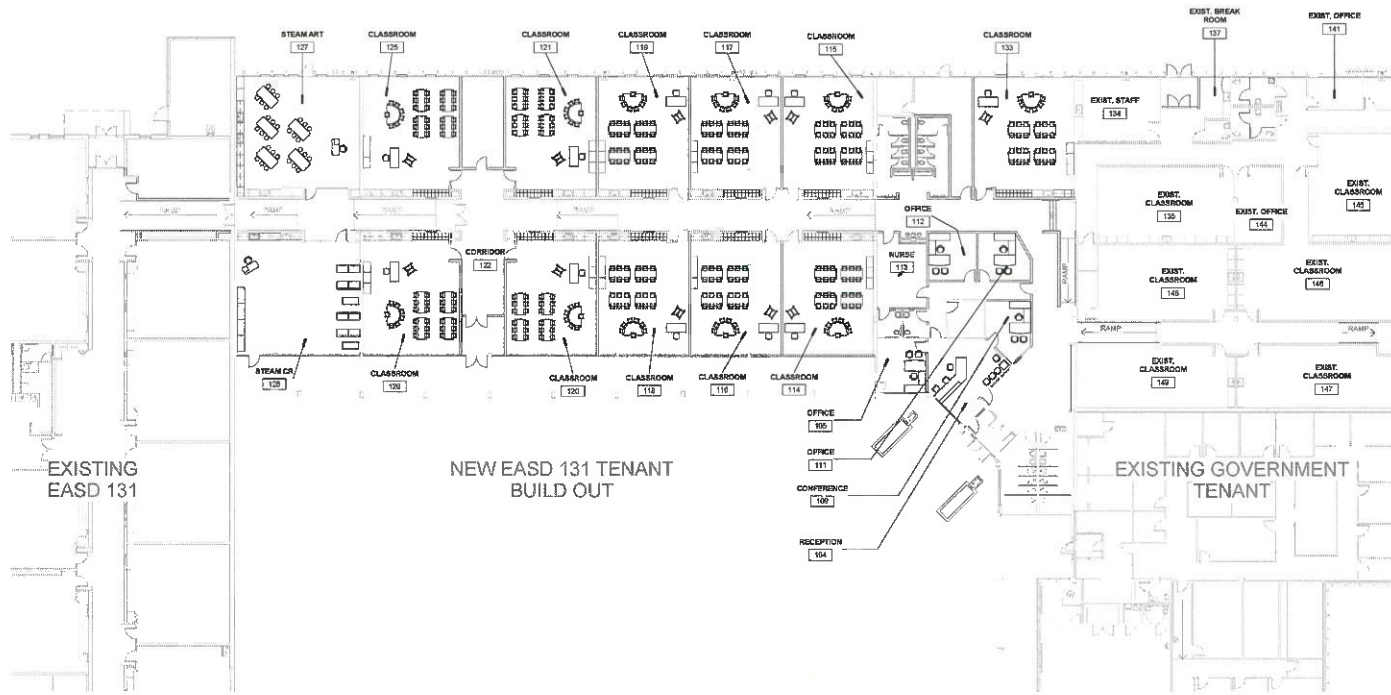


EAST AURORA SCHOOL DISTRICT - 131

417 Fifth Street, Aurora, Illinois

G.N. DIETERICH ELEMENTARY SCHOOL

1141 Jackson Street, Aurora, Illinois



1 OVERALL FURNITURE PLAN  
1/8" = 1'-0"

50 F7 46,200

EXIST. EASD 131  
TENANT (EARLY  
CHILDHOOD  
CENTER)

CORDOGAN CLARK & ASSOCIATES INC.  
ARCHITECTS • ENGINEERS  
Firm  
2000 North Lincoln  
Chicago, IL 60614  
Tel: 312.344.1000  
Fax: 312.344.1001



EARLY CHILDHOOD CENTER - EASD #131  
INDIAN TRAIL BUSINESS CENTER PARTNERS LLP  
278 E BOWEN TRAIL, AUBURN, IL 62505

OVERALL FURNITURE LAYOUT PLAN

JOB NUMBER  
16-334

DATE  
JUNE 19, 2017

REVISIONS  
1. 06/19/17

1. 06/19/17

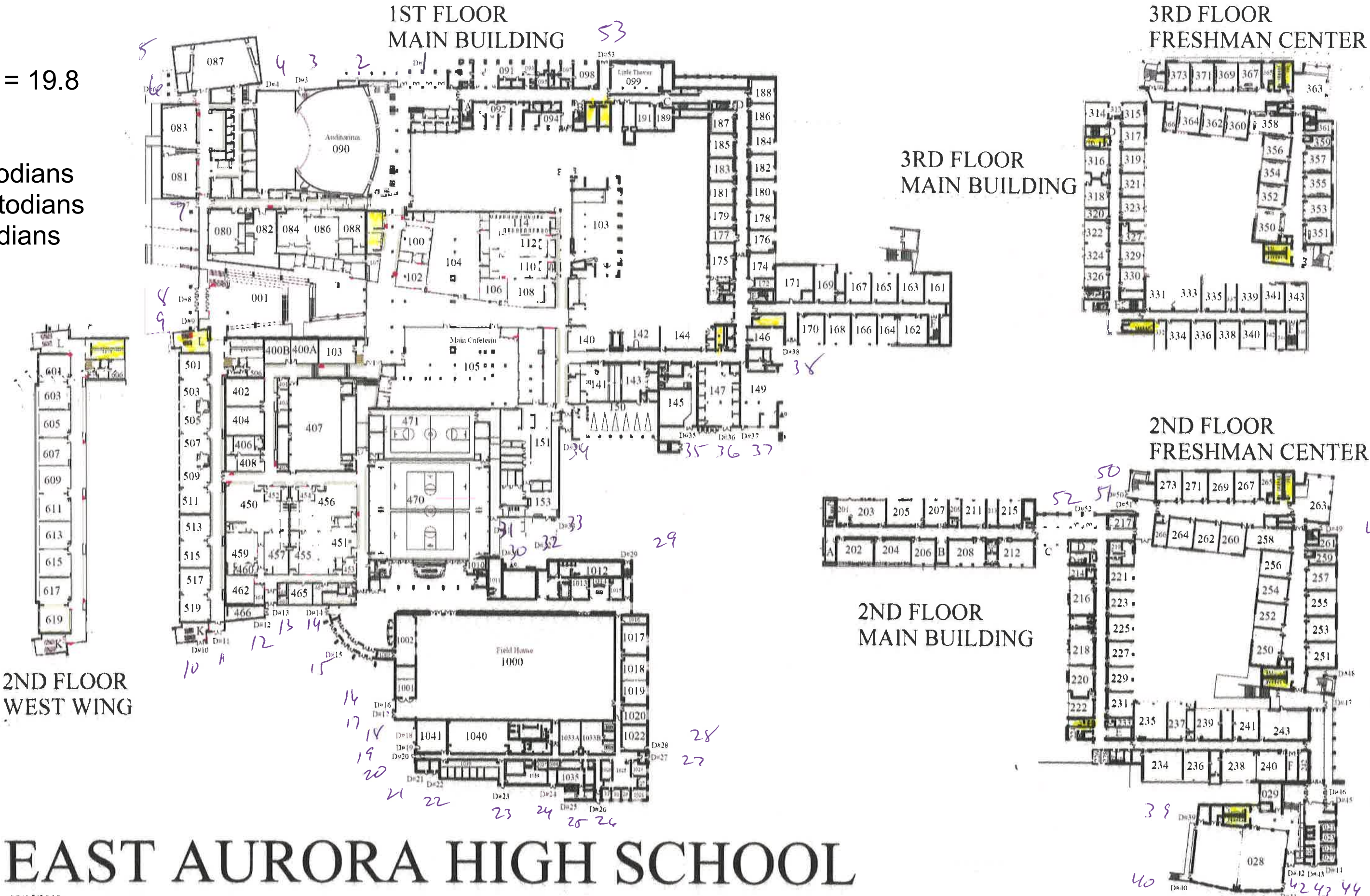
A11.1

Sq. ft = 593,032

Bld. engineer  
23 custodians

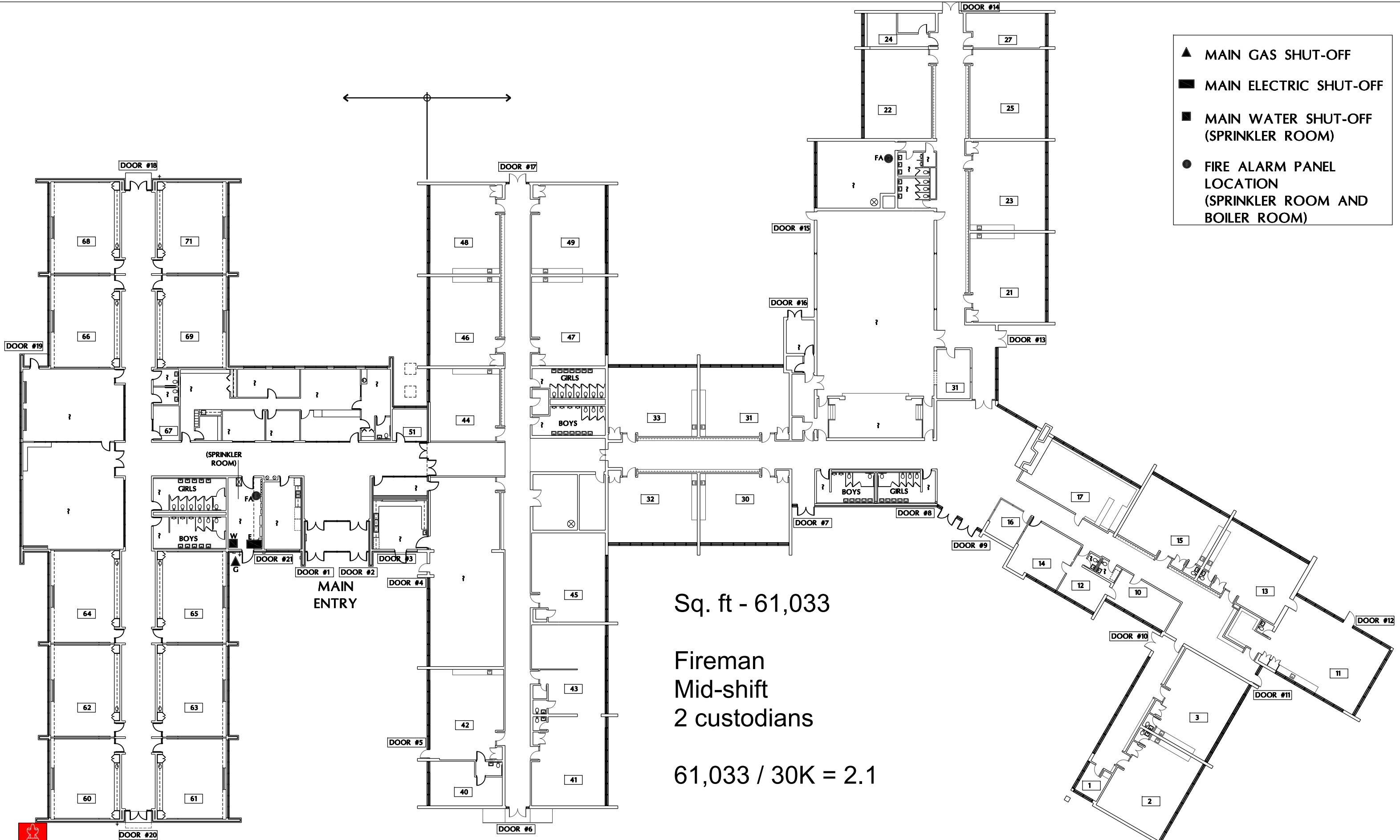
$593,032 / 30K = 19.8$

**\*\*note\*\***  
2 outside custodians  
7 morning custodians  
14 night custodians



# EAST AURORA HIGH SCHOOL





EAST AURORA SCHOOL DISTRICT - 131

417 Fifth Street, Aurora, Illinois



FIRST FLOOR PLAN

Scale: 1"=30'-0"

J.W. GATES ELEMENTARY SCHOOL

800 Seventh Avenue, Aurora, Illinois

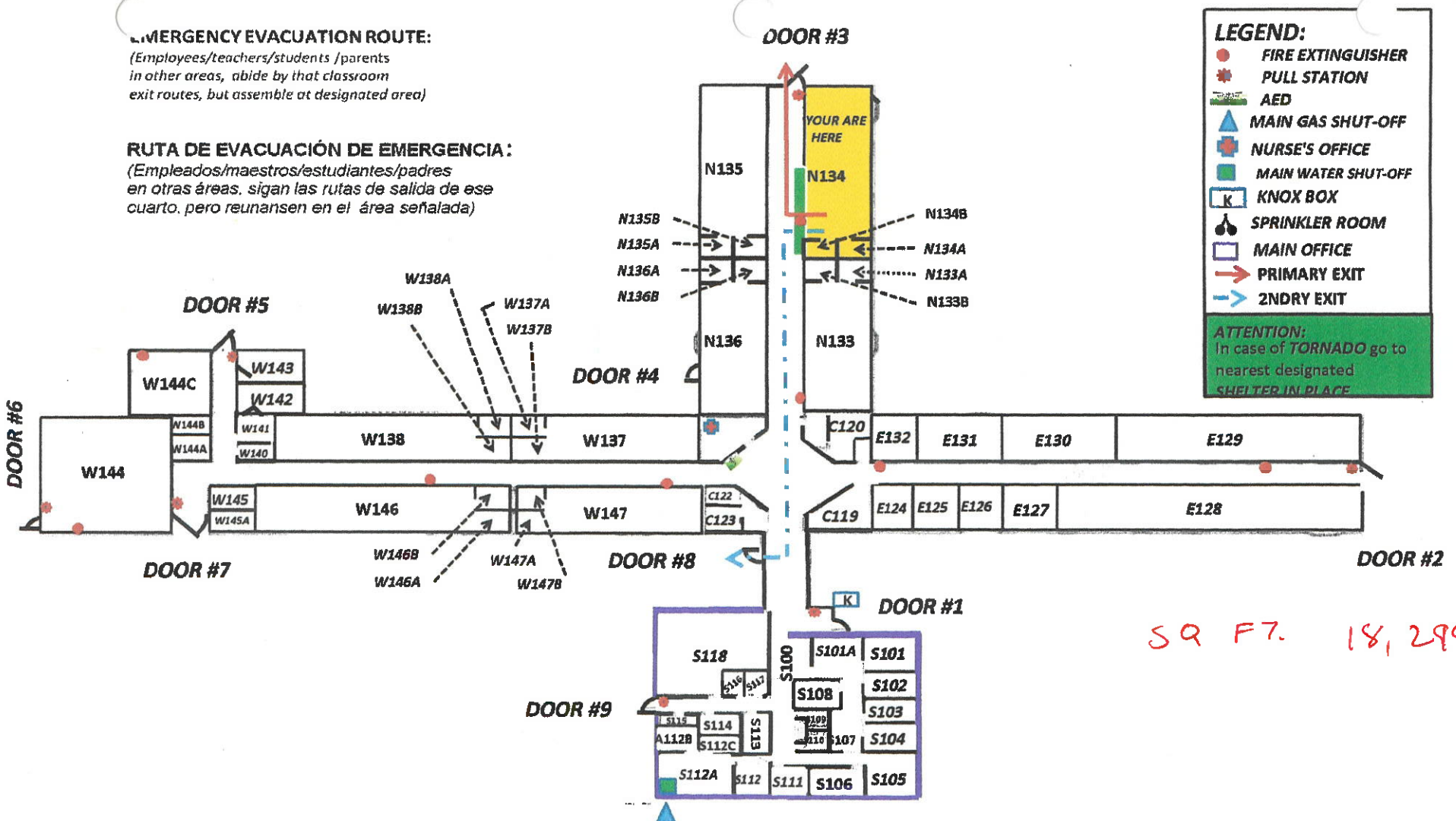
### EMERGENCY EVACUATION ROUTE:

(Employees/teachers/students /parents  
in other areas, abide by that classroom  
exit routes, but assemble at designated area)

### RUTA DE EVACUACIÓN DE EMERGENCIA:

(Empleados/maestros/estudiantes/padres  
en otras áreas, sigan las rutas de salida de ese  
cuarto, pero reunansen en el área señalada)

DOOR #6



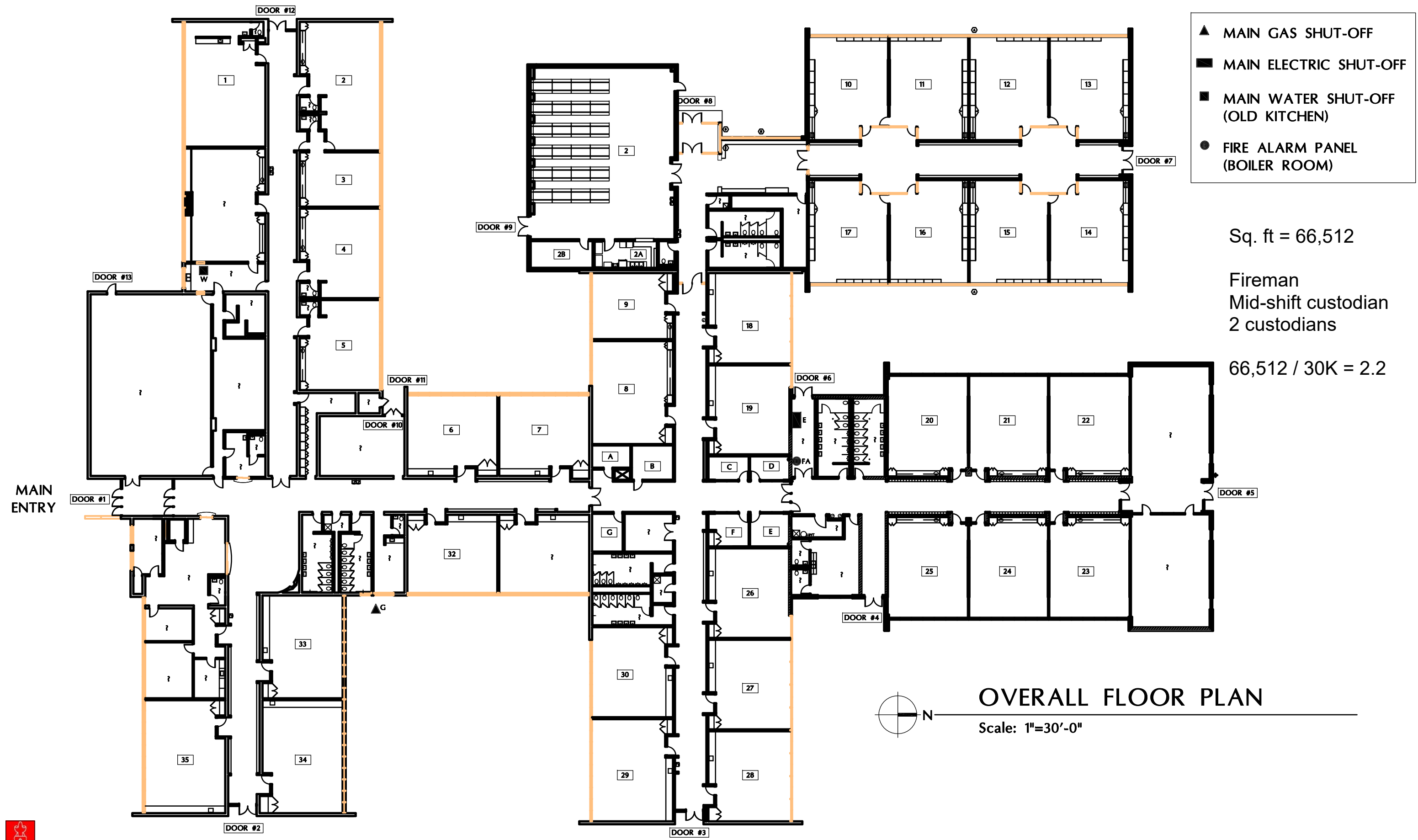
## CHILD SERVICE CENTER FLOOR PLAN

1480 Reckinger Road, AURORA, ILLINOIS

PRIMARY FIRE = EXIT THROUGH DOOR # 3

2NDRY FIRE = EXIT THROUGH DOOR # 8

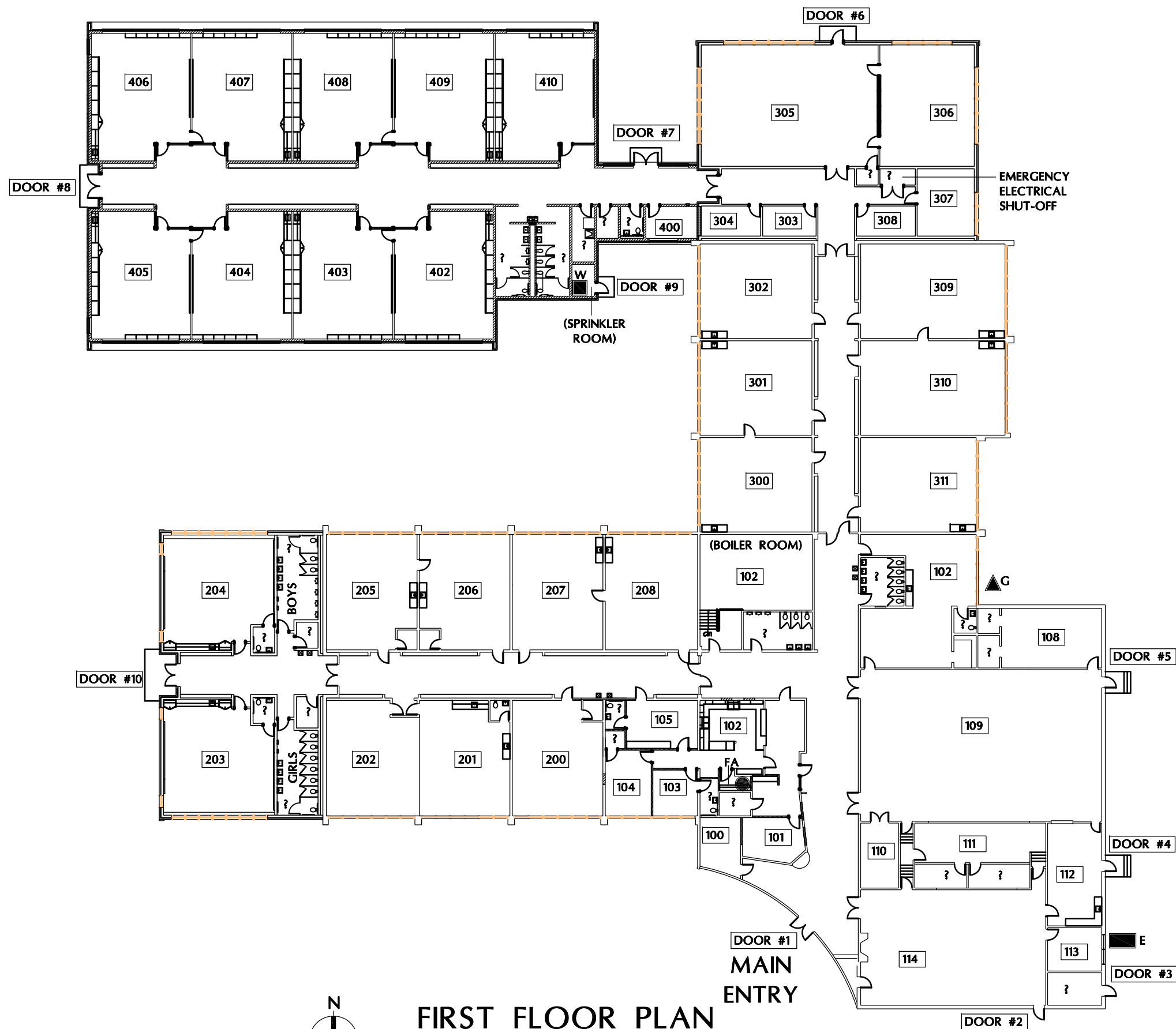
TORNADO SHELTER = EXIT CLASSROOM AND SIT AGAINST WALL



Sq. ft = 49,547

Fireman  
1.5 Custodians

$49,547 / 30K = 1.7$



- ▲ MAIN GAS SHUT-OFF
- MAIN ELECTRIC SHUT-OFF
- MAIN WATER SHUT-OFF (SPRINKLER ROOM)
- FIRE ALARM PANEL LOCATION (MAIN OFFICE)



## FIRST FLOOR PLAN

Scale: 1"=40'-0"



EAST AURORA SCHOOL DISTRICT - 131

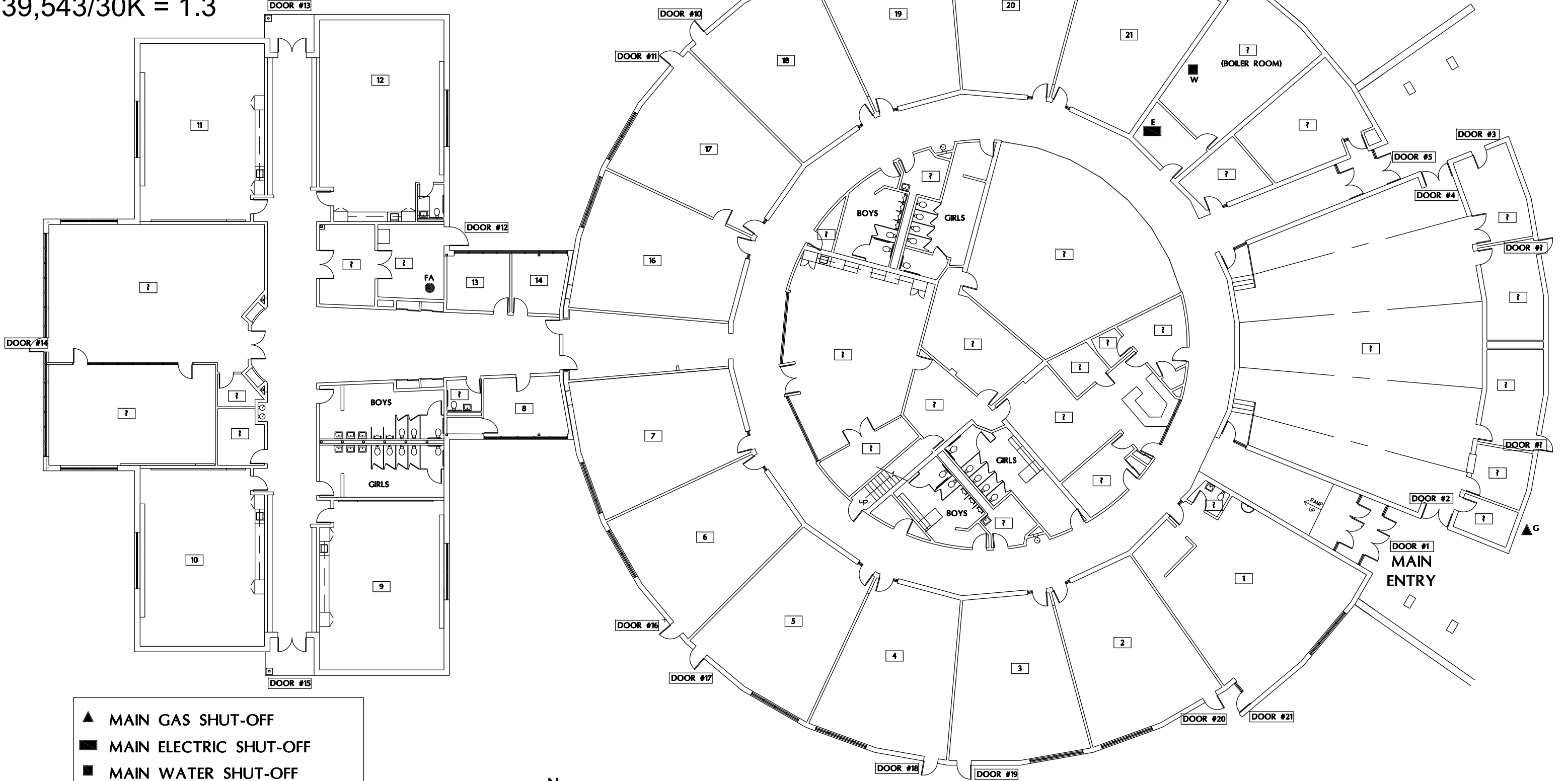
417 Fifth Street, Aurora, Illinois

C.I. JOHNSON ELEMENTARY SCHOOL

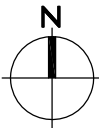
2020 Liberty Street, Aurora, Illinois



Sq. ft = 39,543  
Fireman  
1 custodian  
 $39,543/30K = 1.3$



- ▲ MAIN GAS SHUT-OFF
- MAIN ELECTRIC SHUT-OFF
- MAIN WATER SHUT-OFF
- FIRE ALARM PANEL LOCATION



## FIRST FLOOR PLAN

Scale: 1"=20'-0"

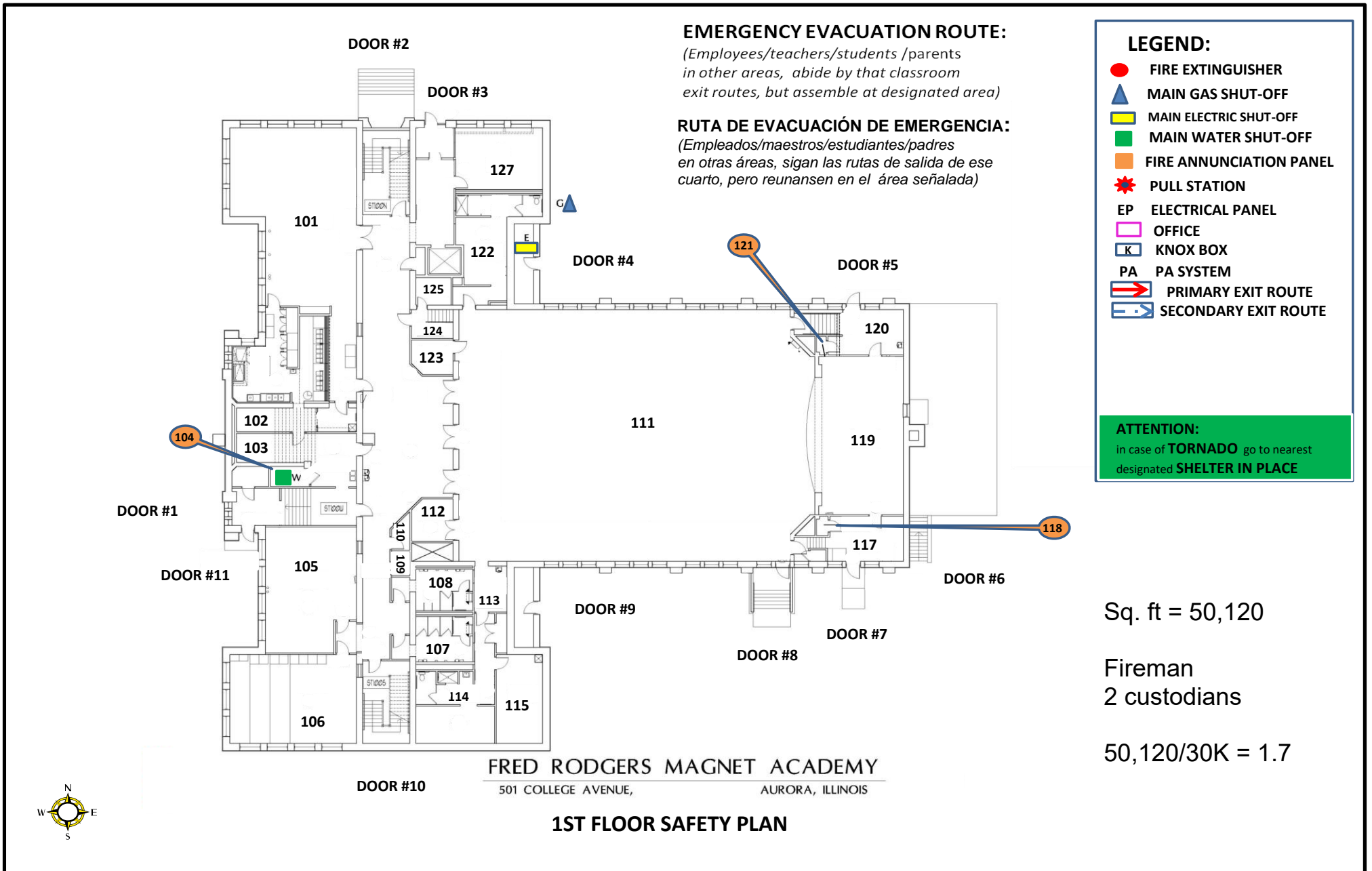


EAST AURORA SCHOOL DISTRICT - 131

417 Fifth Street, Aurora, Illinois

R.E. KRUG ELEMENTARY SCHOOL

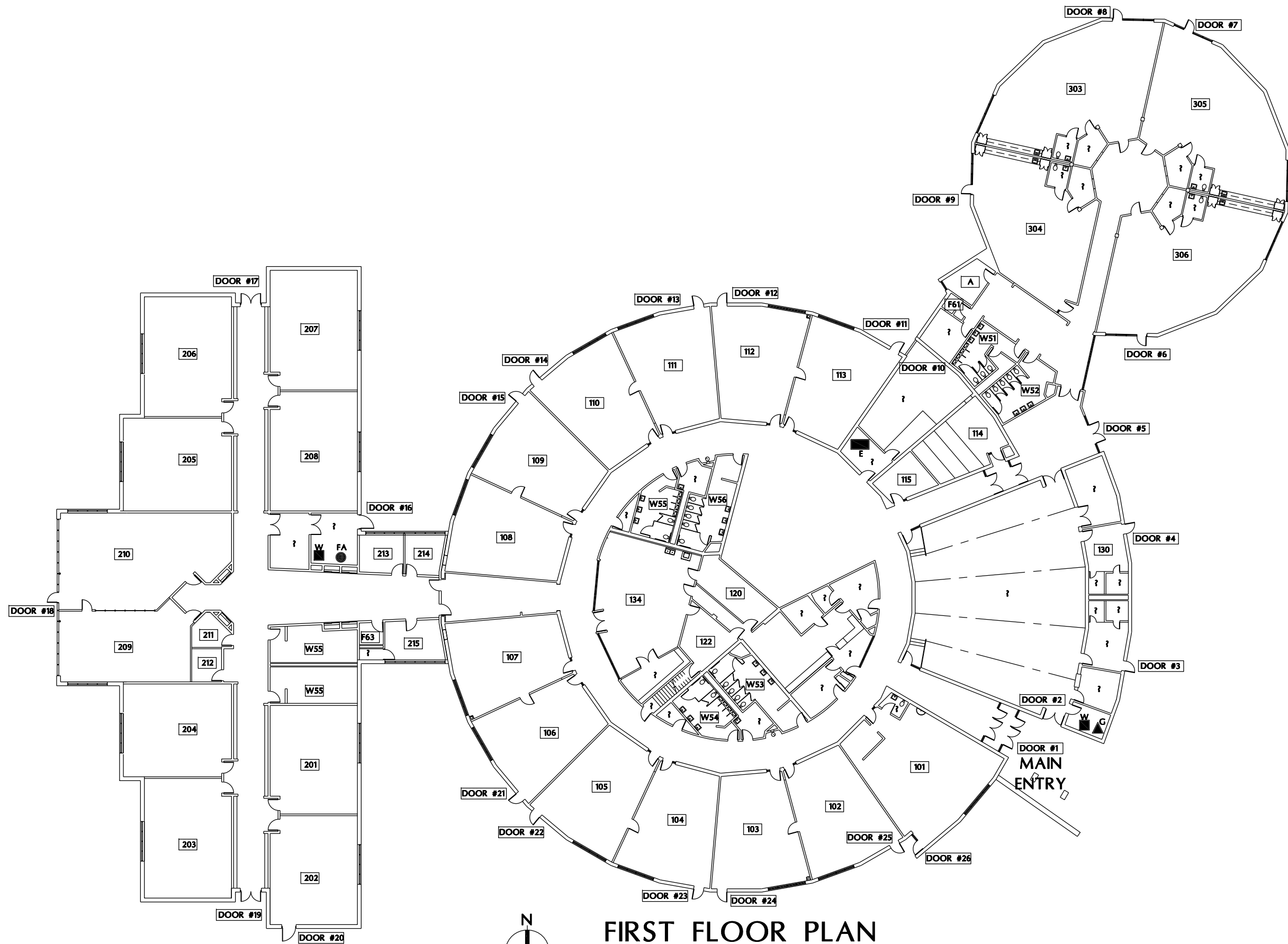
240 Melrose Avenue, Aurora, Illinois



**PRIMARY FIRE = EXIT THROUGH DOOR #**

**2NDRY FIRE = EXIT THROUGH DOOR #**

**TORNADO SHELTER = EXIT CLASSROOM AND SIT AGAINST WALL**

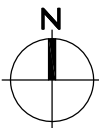


- ▲ MAIN GAS SHUT-OFF
- MAIN ELECTRIC SHUT-OFF
- MAIN WATER SHUT-OFF (TWO LOCATIONS)
- FIRE ALARM PANEL

Sq. ft = 54,832

Fireman  
1.5 custodians

$54,832 / 30K = 1.8$



# FIRST FLOOR PLAN

Scale: 1"=30'-0"



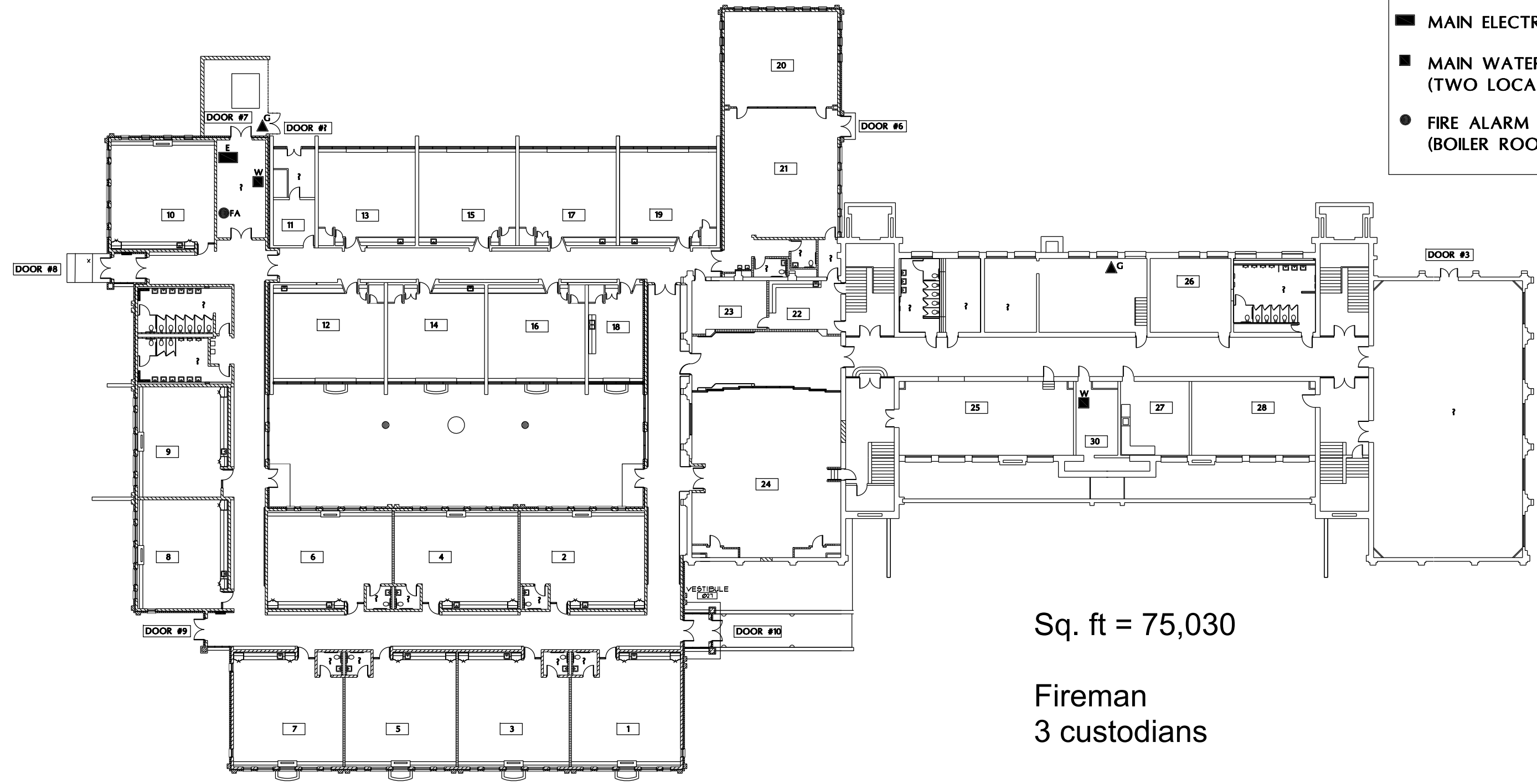
EAST AURORA SCHOOL DISTRICT - 131

417 Fifth Street, Aurora, Illinois

MABEL O'DONNELL ELEMENTARY SCHOOL

1640 Rekinger Road, Aurora, Illinois

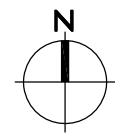
- ▲ MAIN GAS SHUT-OFF (TWO LOCATIONS)
- MAIN ELECTRIC SHUT-OFF
- MAIN WATER SHUT-OFF (TWO LOCATIONS)
- FIRE ALARM PANEL (BOILER ROOM)



Sq. ft = 75,030

Fireman  
3 custodians

$75,030 / 30K = 2.5$



# FIRST FLOOR PLAN

Scale: 1"=30'-0"

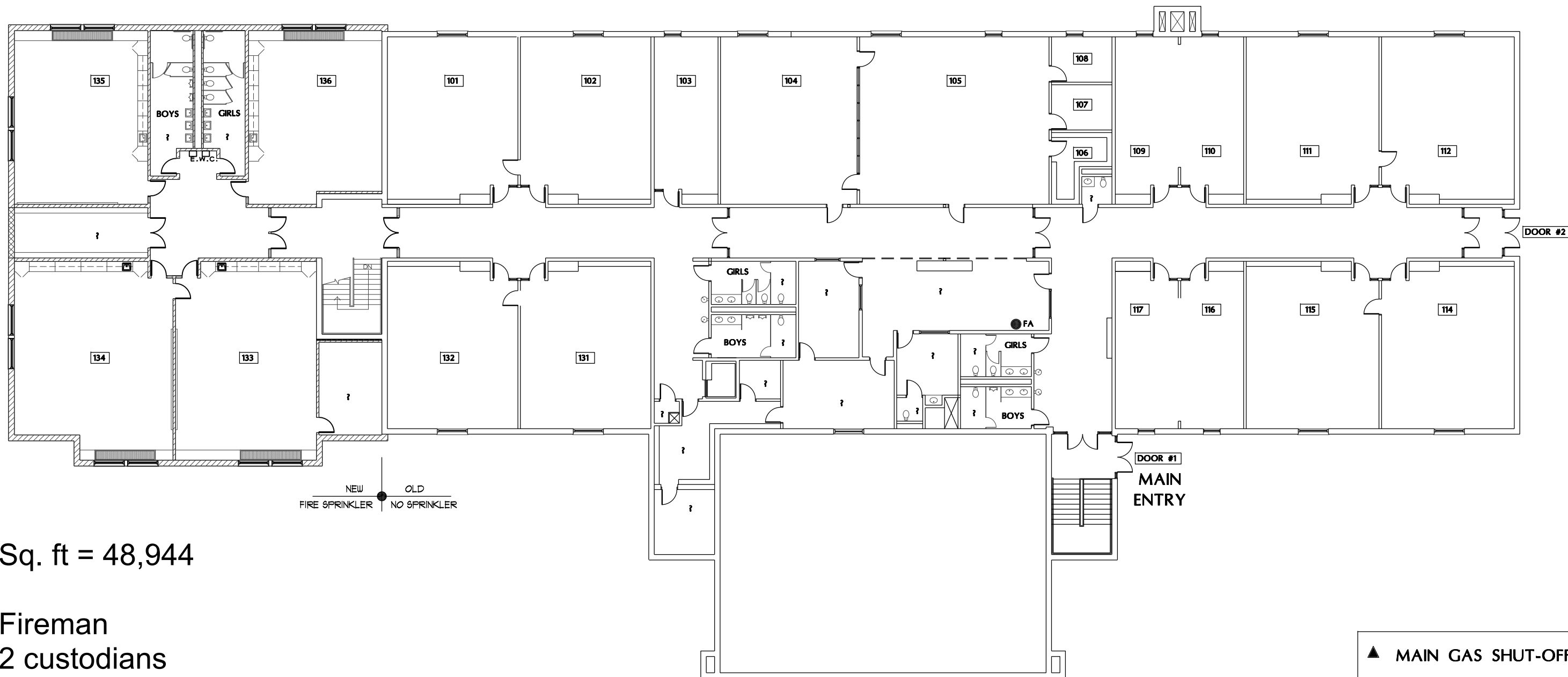


EAST AURORA SCHOOL DISTRICT - 131

417 Fifth Street, Aurora, Illinois

OAK PARK ELEMENTARY SCHOOL

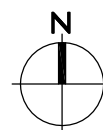
1200 Front Street, Aurora, Illinois



Sq. ft = 48,944

Fireman  
2 custodians

48,944 / 30K = 1.6



## UPPER LEVEL FLOOR PLAN

Scale: 1"=20'-0"

- ▲ MAIN GAS SHUT-OFF
- MAIN ELECTRIC SHUT-OFF (BOILER ROOM)
- MAIN WATER SHUT-OFF (BOILER ROOM)
- FIRE ALARM PANEL (MAIN OFFICE)



EAST AURORA SCHOOL DISTRICT - 131

417 Fifth Street, Aurora, Illinois

E.M. ROLLINS ELEMENTARY SCHOOL

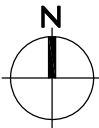
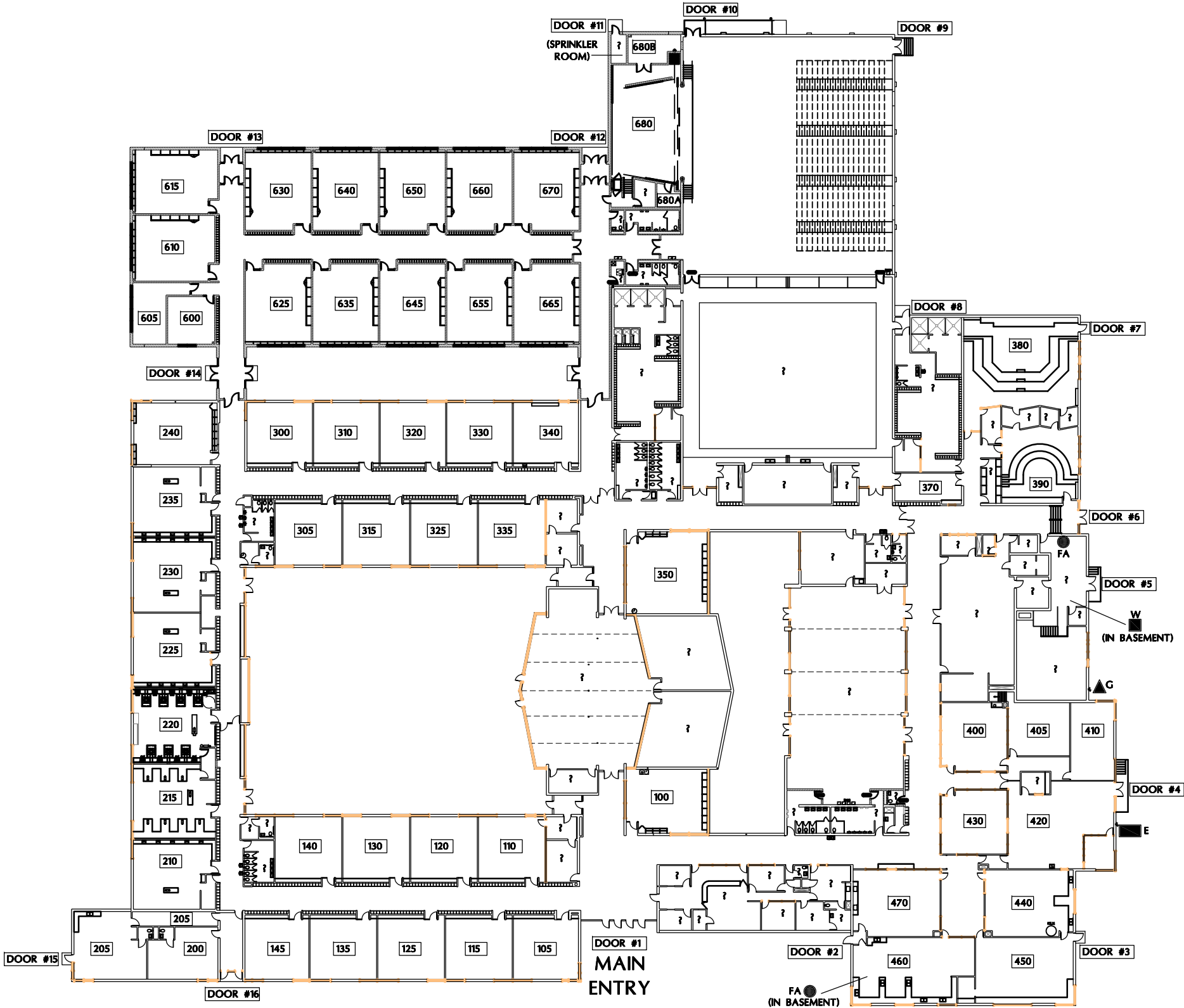
950 Kane Street, Aurora, Illinois

Sq. ft = 136,715

Bld. engineer  
Mid shift custodian  
3 custodians

$136,715 / 30K = 4.5$

- ▲ MAIN GAS SHUT-OFF
- MAIN ELECTRIC SHUT-OFF
- MAIN WATER SHUT-OFF (IN BASEMENT)
- FIRE ALARM PANEL LOCATION (IN BASEMENT)



FLOOR PLAN

Scale: 1" = 50'-0"



EAST AURORA SCHOOL DISTRICT - 131

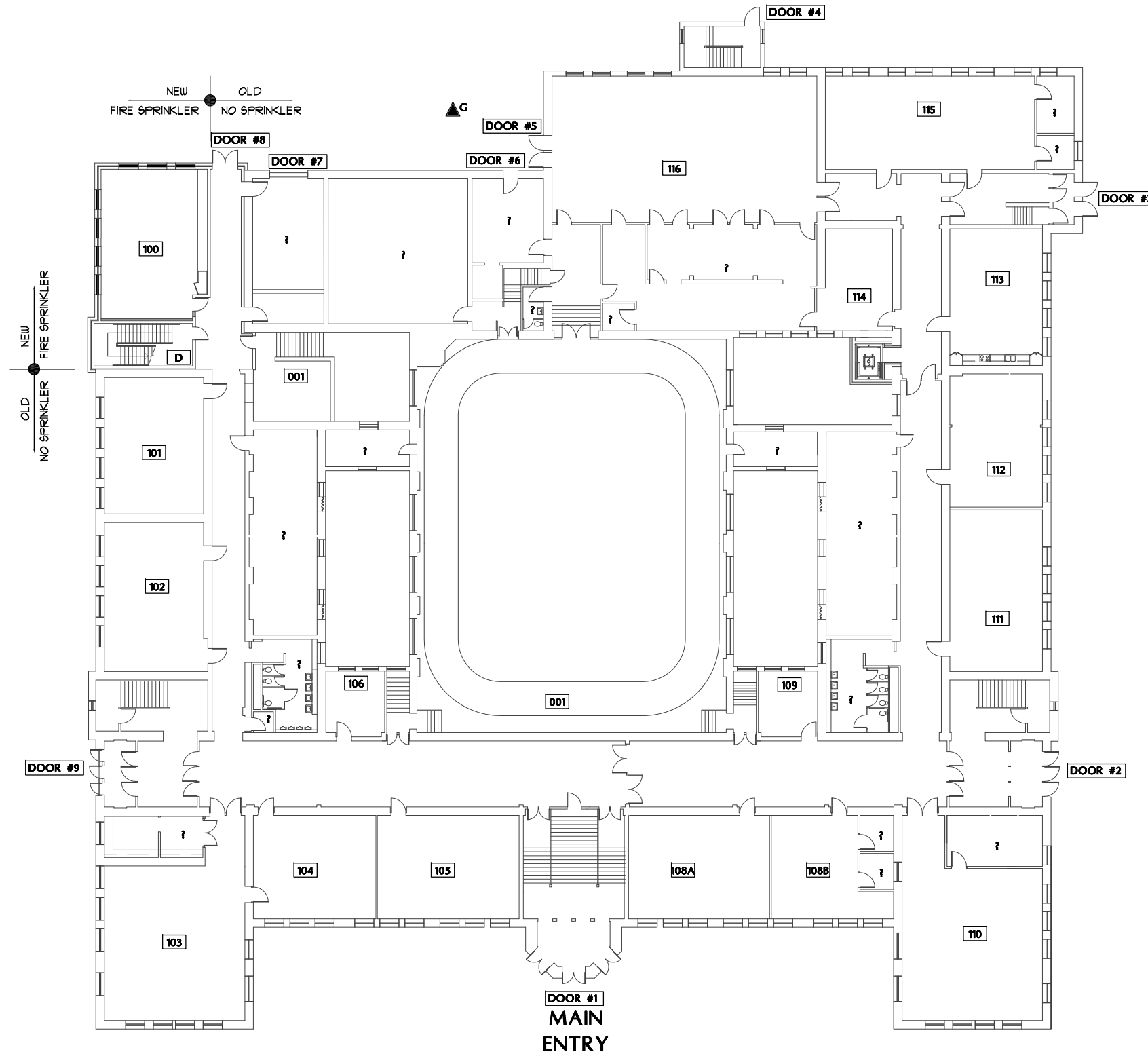
417 Fifth Street, Aurora, Illinois

C.F. SIMMONS MIDDLE SCHOOL

1130 Sheffer Road, Aurora, Illinois



- ▲ MAIN GAS SHUT-OFF
- MAIN ELECTRIC SHUT-OFF
- MAIN WATER SHUT-OFF (SPRINKLER ROOM)
- FIRE ALARM PANEL LOCATION (BOILER ROOM)



Sq. ft = 146,460

Bld. engineer  
Mid shift custodian  
3 custodians

$146,460 / 30K = 4.9$



## FIRST FLOOR PLAN

Scale: 1"=30'-0"



EAST AURORA SCHOOL DISTRICT - 131

417 Fifth Street, Aurora, Illinois

K.D. WALDO MIDDLE SCHOOL

56 Jackson Street, Aurora, Illinois



